

1. ELECTRICAL CONNECTION- AND INSTALLATION TECHNIQUE

1.9 Cable end sleeves

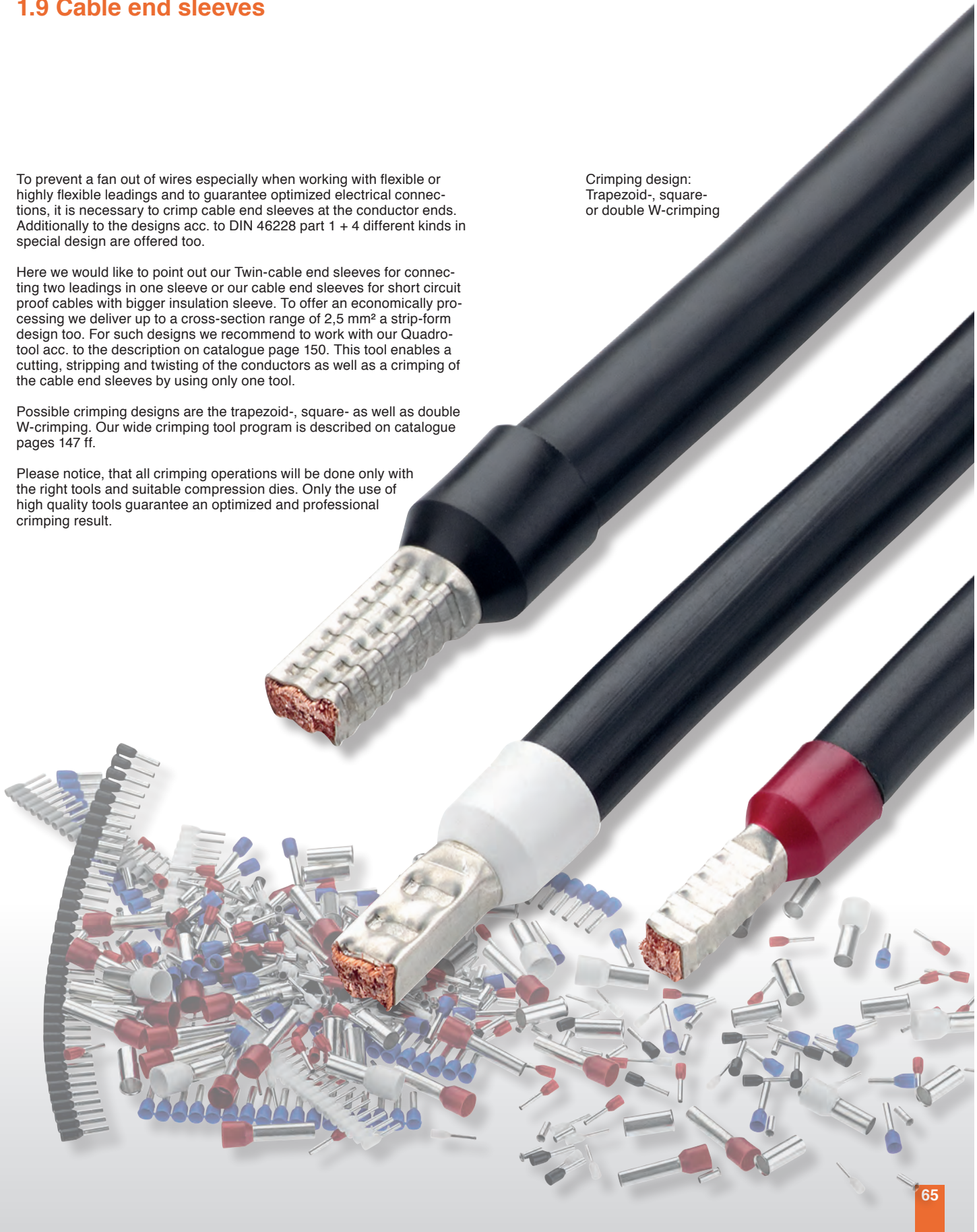
To prevent a fan out of wires especially when working with flexible or highly flexible leadings and to guarantee optimized electrical connections, it is necessary to crimp cable end sleeves at the conductor ends. Additionally to the designs acc. to DIN 46228 part 1 + 4 different kinds in special design are offered too.

Here we would like to point out our Twin-cable end sleeves for connecting two leadings in one sleeve or our cable end sleeves for short circuit proof cables with bigger insulation sleeve. To offer an economically processing we deliver up to a cross-section range of 2,5 mm² a strip-form design too. For such designs we recommend to work with our Quadro-tool acc. to the description on catalogue page 150. This tool enables a cutting, stripping and twisting of the conductors as well as a crimping of the cable end sleeves by using only one tool.

Possible crimping designs are the trapezoid-, square- as well as double W-crimping. Our wide crimping tool program is described on catalogue pages 147 ff.

Please notice, that all crimping operations will be done only with the right tools and suitable compression dies. Only the use of high quality tools guarantee an optimized and professional crimping result.

Crimping design:
Trapezoid-, square-
or double W-crimping



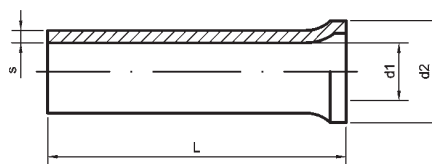
Cable end sleeves 0,25-25 mm²

in acc. with DIN 46228 page 1

and special design

Material: copper acc. to DIN 13600

Surface: tinned

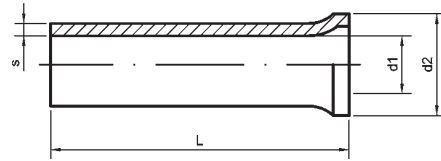


Part-No.	cross-section mm ²	size	dimensions mm				weight kg/‰ pcs.	crimping-tools/page no.
			d ₁	d ₂	L	s		
01206	0,25	5 - 0,25	0,75	1,7	5	0,15	0,02	12230 page no. 156/157; Further tool-solutions are contained on pages no. 167 ff
01207		7 - 0,25			7		0,03	
01208	0,34	5 - 0,34	0,85	1,8	5	0,15	0,02	12637 page no. 148
01209		7 - 0,34			7		0,03	
01210	0,5	6 - 0,5	1	2,1	6	0,15	0,03	12430, 12408, 12425, pages no. 158/159; 05160 page no. 153; 12655 from 6 mm ² page no. 164; 05184 from 10 mm ² page no. 150
13199		8 - 0,5			8		0,04	
13200		10 - 0,5			10		0,05	12648 page no. 150
01211	0,75	6 - 0,75	1,2	2,3	6	0,15	0,04	
01212		8 - 0,75			8		0,05	12648 page no. 148
13201		10 - 0,75			10		0,06	
13600		15 - 0,75			15		0,09	12648 page no. 148
01213	1	6 - 1	1,4	2,5	6	0,15	0,05	
13601		8 - 1			8		0,06	12648 page no. 148
01214		10 - 1			10		0,07	
13602		12 - 1			12		0,08	12648 page no. 148
13603		15 - 1			15		0,11	
01215	1,5	7 - 1,5	1,7	2,8	7	0,15	0,06	12648 page no. 148
01216		10 - 1,5			10		0,09	
01217		12 - 1,5			12		0,10	12648 page no. 148
13604		15 - 1,5			15		0,13	
13202		18 - 1,5			18		0,15	12648 page no. 148
13605		20 - 1,5			20		0,17	
01218	2,5	7 - 2,5	2,2	3,4	7	0,15	0,08	12648 page no. 148
13203		10 - 2,5			10		0,11	
01219		12 - 2,5			12		0,13	12648 page no. 148
13607		15 - 2,5			15		0,17	
13204		18 - 2,5			18		0,20	12648 page no. 148
13608		20 - 2,5			20		0,22	
01220	4	9 - 4	2,8	4	9	0,2	0,16	12648 page no. 148
01221		12 - 4			12		0,21	
13205		15 - 4			15		0,27	12648 page no. 148
13206		18 - 4			18		0,32	
13609		20 - 4			20		0,35	12648 page no. 148
01222	6	10 - 6	3,5	4,7	10	0,2	0,23	
01223		12 - 6			12		0,27	12648 page no. 148
01224		15 - 6			15		0,34	
13207		18 - 6			18		0,41	12648 page no. 148
13610		20 - 6			20		0,45	
13611		25 - 6			25		0,58	12648 page no. 148
01225	10	12 - 10	4,5	5,8	12	0,2	0,33	
01226		15 - 10			15		0,41	12648 page no. 148
01227		18 - 10			18		0,48	
13612		20 - 10			20		0,55	12648 page no. 148
13613		25 - 10			25		0,68	
01228	16	12 - 16	5,8	7,5	12	0,2	0,43	12648 page no. 148
01229		15 - 16			15		0,53	
01230		18 - 16			18		0,63	12648 page no. 148
13208		25 - 16			25		0,87	
13209		32 - 16			32		1,11	12648 page no. 148
01231	25	15 - 25	7,3	9,5	15	0,2	0,79	
01232		18 - 25			18		0,94	12648 page no. 148
13614		20 - 25			20		1,04	
13615		25 - 25			25		1,30	12648 page no. 148
13616		28 - 25			28		1,45	

Cable end sleeves 35-185 mm²

in acc. with DIN 46228 page 1
and special design

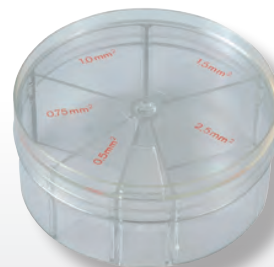
Material: copper acc. to DIN 13600
Surface: tinned



Part-No.	cross-section mm ²	size	dimensions mm			s	weight kg/‰ pcs.	crimping-tools/page no.	
			d ₁	d ₂	L				
01233	35	15 - 35	8,3	11	15	0,2	0,76	31460 pages no. 169/170; 12766 page no. 172; 12965/S; 12968 page no. 173; 14240/41 pages no. 176/177; 13552 pages no. 180/181; 13551/25; 13551/42; 13537; pages no. 182/183; 12836; 12485; 12486; 12487 page no. 199; 12837 page no. 200 30460 pages no. 167/168; 12930; 12933 page no. 171; 12748 pages no. 178/179; 12740/42 pages no. 176/177 12649; 05184 page no. 150; 05160 page no. 153; 12430; 12408; 12425 pages no. 158/159; 12230 page no. 156/157; 12655 pages no. 165/166	
01234		18 - 35			18				0,90
01235		22 - 35			22				1,10
01236		25 - 35			25				1,24
01237		30 - 35			30				1,49
01238		32 - 35			32				1,58
13617	50	18 - 50	10,5	13	18	0,3	1,69		
13618		22 - 50			22				2,05
13619		25 - 50			25				2,32
13620		30 - 50			30				2,77
13621	32 - 50	32	2,95						
13622	70	22 - 70	12,7	15	22	0,4			3,31
13623		25 - 70			25		3,75		
13624		30 - 70			30		4,18		
13625		32 - 70			32		4,78		
13626	95	25 - 95	14,7	17	25	0,4	4,32		
13627		30 - 95			30				
13628		32 - 95			32				5,51
13629		34 - 95			34				5,84
13630	120	30 - 120	16,7	19	30	0,5			7,35
13631		32 - 120			32			7,83	
13632		34 - 120			34		8,31		
13633		38 - 120			38		9,28		
13634	40 - 120	40	9,76						
13635	150	32 - 150	18,7	21	32	0,5	8,75		
13636		34 - 150			34			9,28	
13637		38 - 150			38			10,36	
13638		40 - 150			40			10,89	
13639	185	32 - 185	20,2	23,5	32	0,6		11,38	
13640		40 - 185			40				14,17

Assortment boxes

filled with uninsulated cable end sleeves
in acc. with DIN 46228 page 1



Part-No.	content			Part-No.	content			Part-No.	content			Part-No.	content		
01300	500 St.	6 - 0,5	# 01210	01301	100 pcs.	9 - 4	# 01220	01302	unfilled with 5 partition			01303	unfilled with 4 partition		
	500 St.	6 - 0,75	# 01211		100 pcs.	10 - 6	# 01222								
	500 St.	6 - 1	# 01213		50 pcs.	18 - 10	# 01227								
	300 St.	7 - 1,5	# 01215		25 pcs.	18 - 16	# 01230								
	200 St.	7 - 2,5	# 01218												

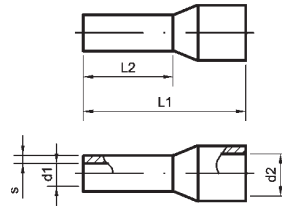
Insulated cable end sleeves 0,14-150 mm²

Colour: usual in trade design

Material: copper acc. to DIN EN 13600

Surface: tinned

Insulation sleeve: PP



Part-No.	colour	Part-No.	colour	cross-section mm ²	size	dimensions mm					weight kg/‰ pcs.	crimping-tools/page no.
						L ₁	L ₂	d ₁	d ₂	s		
55993	brown	56038	grey	0,14	6 - 0,14	10	6	0,7	1,6	0,15	0,047	12646 from 0,14 mm ² , 05140 from 0,25 mm ² page no. 148 12648 page no. 150 12649 page no. 150 12649 from 0,08 mm ² page no. 149; 05130 page no. 148 05144 from 0,08 mm ² , 12641 from 2,5 mm ² page no. 149; 05125, 12858 from 0,5 mm ² page no. 148; 05122 from 0,75 mm ² page no. 148; 05131 page no. 148 12430, 12408, 12425 pages no. 158/159; 05160 page no. 153; 12655 from 6 mm ² pages no. 163/164; 05184 from 10 mm ² page no. 150; 12230 page no. 156/157 Further tools with exchangeable die sets page no. 169 ff
55994		56039			8 - 0,14	12	8				0,055	
55995	violet	56040	light blue	0,25	6 - 0,25	10	6	0,75	1,8	0,15	0,047	
55996		56041			8 - 0,25	12	8				0,057	
55997	pink	56042	turquoise	0,34	6 - 0,34	10	6	0,8	2	0,15	0,047	
55998		56043			8 - 0,34	12	8				0,055	
55999	white	56044	orange	0,5	6 - 0,5	12	6	1	2,6	0,15	0,063	
56000		56045			8 - 0,5	14	8				0,075	
56000/1		56046			10 - 0,5	16	10				0,085	
56001/1	blue	56047	white	0,75	6 - 0,75	12	6	1,2	2,8	0,15	0,077	
56001		56048			8 - 0,75	14	8				0,089	
56001/2		56049			10 - 0,75	16	10				0,100	
56001/3		56050			12 - 0,75	18	12				0,110	
56002/1	red	56051	yellow	1	6 - 1	12	6	1,4	3	0,15	0,084	
56002		56052			8 - 1	14	8				0,100	
56002/2		56053			10 - 1	16	10				0,110	
56002/3		56054			12 - 1	18	12				0,125	
56003	black	56055	red	1,5	8 - 1,5	14	8	1,7	3,5	0,15	0,115	
56003/1		56056			10 - 1,5	16	10				0,130	
56003/2		56056/1			12 - 1,5	18	12				0,150	
56004		56057			18 - 1,5	24	18				0,200	
56006	grey	56058	blue	2,5	8 - 2,5	14	8	2,2	4,2	0,15	0,160	
56006/1		56059			12 - 2,5	18	12				0,200	
56007		56060			18 - 2,5	24	18				0,265	
56008	orange	56061	grey	4	10 - 4	17	10	2,8	4,8	0,2	0,270	
56008/1		56062			12 - 4	20	12				0,300	
56009		56063			18 - 4	26	18				0,440	
56010	green	56064	black	6	12 - 6	20	12	3,5	6,3	0,2	0,430	
56011		56065			18 - 6	26	18				0,550	
56012	brown	56066	white	10	12 - 10	22	12	4,5	7,6	0,2	0,560	
56013		56067			18 - 10	28	18				0,730	
56014	white	56068	green	16	12 - 16	24	12	5,8	8,8	0,2	0,820	
56015		56069			18 - 16	28	18				1,000	
56016	black	56070	brown	25	16 - 25	30	16	7,3	11,2	0,2	1,400	
56016/1		56070/1			18 - 25	30	18				1,420	
56017		56071			22 - 25	36	22				1,650	
56018	red	56072	beige	35	16 - 35	30	16	8,3	12,7	0,2	1,620	
56018/1		56072/1			18 - 35	30	18				1,700	
56019		56073			25 - 35	39	25				2,140	
56020	blue	56074	olive	50	20 - 50	36	20	10,3	15	0,3	2,990	
56021		56075			25 - 50	40	25				3,520	
-	-	56076	yellow	70	20 - 70	37	20	13,5	16	0,4	5,800	
-	-	56077	red	95	25 - 95	44	25	14,5	18	0,4	6,880	
-	-	56078	blue	120	27 - 120	48	27	16,5	20	0,45	9,360	
-	-	56079	yellow	150	32 - 150	58	32	19,5	28	0,5	13,450	

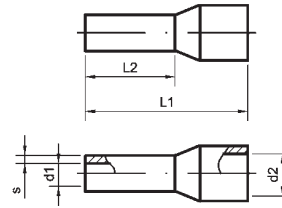
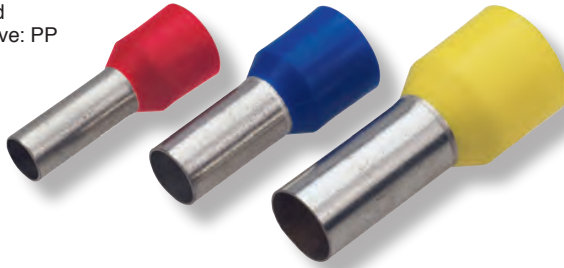
Insulated cable end sleeves 0,5-50 mm²

in acc. with DIN 46228 page 4

Material: copper acc. to DIN EN 13600

Surface: tinned

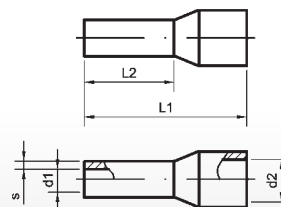
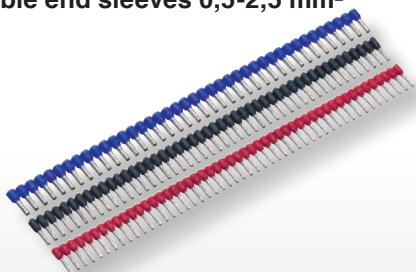
Insulation sleeve: PP



Part-No.	colour	cross-section mm ²	size	dimensions mm					weight kg/‰ pcs.	crimping-tools/page no.
				L1	L2	d1	d2	s		
55999	white	0,5	6 - 0,5	12	6	1	2,6	0,15	0,063	12646 from 0,14 mm ² ; 05140 from 0,25 mm ² page no. 149; 05124, 05130 page no. 148 12430, 12408, 12425 pages no. 158/159; 05160 page no. 153; 12655 from 6 mm ² pages no. 165/166; 05184 from 10 mm ² page no. 150; 12230 page no. 156/157 05144 from 0,08 mm ² ; 12641 from 2,5 mm ² page no. 149; 05125, 12858 from 0,5 mm ² page no. 148; 05122 from 0,75 mm ² page no. 148; 05131 page no. 148 Tools with exchangeable crimping dies page no. 167 ff 12648 page no. 150 12649 page no. 150
56000			8 - 0,5	14	8				0,075	
56000/1			10 - 0,5	16	10				0,085	
56080	grey	0,75	6 - 0,75	12	6	1,2	2,8	0,15	0,077	
56081			8 - 0,75	14	8				0,085	
56082			10 - 0,75	16	10				0,100	
56083			12 - 0,75	18	12				0,110	
56002/1	red	1	6 - 1	12	6	1,4	3	0,15	0,084	
56002			8 - 1	14	8				0,100	
56002/2			10 - 1	16	10				0,110	
56002/3			12 - 1	18	12				0,125	
56003	black	1,5	8 - 1,5	14	8	1,7	3,5	0,15	0,115	
56003/1			10 - 1,5	16	10				0,130	
56003/2			12 - 1,5	18	12				0,150	
56004			18 - 1,5	24	18				0,200	
56058	blue	2,5	8 - 2,5	14	8	2,2	4,2	0,15	0,160	
56059			12 - 2,5	18	12				0,200	
56060			18 - 2,5	24	18				0,265	
56061	grey	4	10 - 4	17	10	2,8	4,8	0,2	0,270	
56062			12 - 4	20	12				0,300	
56063			18 - 4	26	18				0,440	
56084	yellow	6	12 - 6	20	12	3,5	6,3	0,2	0,430	
56085			18 - 6	26	18				0,550	
56086	red	10	12 - 10	22	12	4,5	7,6	0,2	0,560	
56087			18 - 10	28	18				0,730	
56088	blue	16	12 - 16	24	12	5,8	8,8	0,2	0,820	
56089			18 - 16	28	18				1,000	
56090	yellow	25	16 - 25	30	16	7,3	11,2	0,2	1,400	
56090/1			18 - 25	30	18				1,420	
56091			22 - 25	36	22				1,650	
56018	red	35	16 - 35	30	16	8,3	12,7	0,2	1,620	
56018/1			18 - 35	30	18				1,700	
56019			25 - 35	39	25				2,140	
56020	blue	50	20 - 50	36	20	10,3	15	0,3	2,990	
56021			25 - 50	40	25				3,520	

Insulated cable end sleeves 0,5-2,5 mm²

in strip form



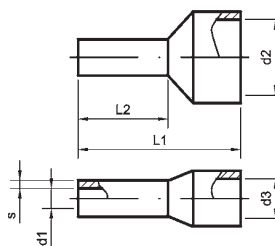
Part-No.	usual in trade design		design DIN 46228		cross-section mm ²	dimensions mm					crimping-tools/page no.	
	colour	Part-No.	colour	Best-Nr.		colour	L ₁	L ₂	d ₁	d ₂		s
56000 str	weiß	56045 str	orange	56000 str	weiß	0,5	14	8	1	2,6	0,15	12510/12512 page no. 150
56001 str	blue	56048 str	white	56081 str	grau	0,75	14	8	1,2	2,8	0,15	
56002 str	red	56052 str	yellow	56002 str	red	1	14	8	1,4	3	0,15	
56003 str	black	56055 str	red	56003 str	black	1,5	14	8	1,7	3,5	0,15	
56006 str	grau	56058 str	blue	56058 str	blue	2,5	14	8	2,3	4,2	0,15	

**Insulated twin cable end sleeves
with rectangular insulation sleeve
for two cables 0,5-16 mm²**

Material: copper acc. to DIN EN 13600

Surface: tinned

Insulation sleeve: PP



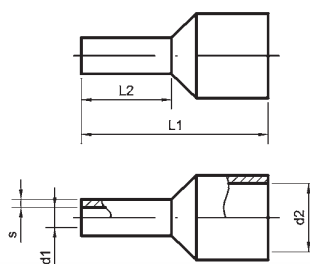
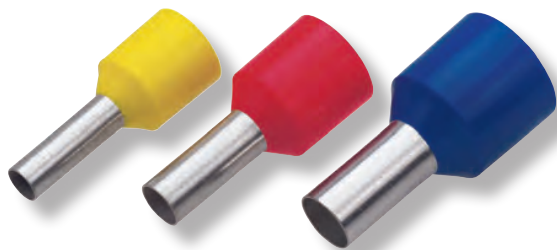
Part-No.	colour	cross-section mm ²	dimensions mm						weight kg/‰ pcs.	crimping-tools/page no.
			L ₁	L ₂	d ₁	d ₂	d ₃	s		
57000	white	2 x 0,5	15	8	1,5	4,9	2,5	0,15	0,12	05144 page no. 149; 05130 page no. 148 12640, 12646, 05140 page no. 149; 05124 page no. 148; 05130 (0,5 up to 10 mm ²), 05131 (0,5 up to 16 mm ²) page no. 148 12641, 12647 p.no. 149 12766 p. 170; 13552 p. 178; 14240/41 p.174/175 12649 p. 150
57001	grey	2 x 0,75	15	8	1,8	5,2	2,6	0,15	0,14	
57002			19	10					0,15	
57003	red	2 x 1	16	8	2	5,8	3,2	0,15	0,16	
57004			17	10					0,18	
57005	black	2 x 1,5	16	8	2,3	6,5	3,6	0,15	0,19	
57006			20	12					0,23	
57007	blue	2 x 2,5	18	10	2,9	7,5	4,3	0,15	0,33	
57008			21	13					0,38	
57009	grey	2 x 4	23	12	3,8	9	5,2	0,2	0,52	
57010	yellow	2 x 6	26	14	4,9	10	7,2	0,2	0,72	
57011	red	2 x 10	26	14	6,5	13	7,2	0,2	0,92	
57012	blue	2 x 16	30	14	8,3	18	9,5	0,2	1,34	

**Insulated cable end sleeves 1,5-16 mm²
for short circuit proof cables with thick insulation**

Material: copper acc. to DIN EN 13600

Surface: tinned

Insulation sleeve: PP with flaring insulation part



Part-No.	colour	cross-section mm ²	size	dimensions mm					weight kg/‰ pcs.	crimping-tools/page no.
				L ₁	L ₂	d ₁	d ₂	s		
58000	black	1,5	8 - 1,5	17,5	8	1,8	5,9	0,15	0,25	pages no. 148-150, 153, 156-159
58002			10 - 1,5	19,5	10				0,27	
58004	blue	2,5	8 - 2,5	17,5	8	2,3	7,8	0,15	0,28	
58006			12 - 2,5	21,5	12				0,31	
58008	green	4	10 - 4	19,5	10	2,9	7,8	0,2	0,4	
58010	yellow	6	12 - 6	23	12	3,6	8,3	0,2	0,55	
58012	red	10	12 - 10	24	12	4,6	9,8	0,2	0,69	
58014	blue	16	12 - 16	25,5	12	6	12,0	0,2	0,96	

Assortment-boxes 0,5-2,5 mm²

filled with insulated cable end sleeves
in acc. with DIN 46228 page 4 and special design



Part-No.	content				Part-No.	content				Part-No.	content			
01305	50 pcs.	8 - 0,5	white	# 56000	01307	50 pcs.	8 - 0,5	orange	# 56045	01309	50 pcs.	8 - 0,5	white	# 56000
	100 pcs.	8 - 0,75	blue	# 56001		100 pcs.	8 - 0,75	white	# 56048		100 pcs.	8 - 0,75	grey	# 56081
	100 pcs.	8 - 1	red	# 56002		100 pcs.	8 - 1	yellow	# 56052		100 pcs.	8 - 1	red	# 56002
	100 pcs.	8 - 1,5	black	# 56003		100 Stck	8 - 1,5	red	# 56055		100 pcs.	8 - 1,5	black	# 56003
	50 pcs.	8 - 2,5	grey	# 56006		50 pcs.	8 - 2,5	blue	# 56058		50 pcs.	8 - 2,5	blue	# 56058

Assortment-boxes 4-16 mm²

filled with insulated cable end sleeves
in acc. with DIN 46228 page 4 and special design



Part-No.	content				Part-No.	content				Part-No.	content			
01306	50 pcs.	10 - 4	orange	# 56008	01308	50 pcs.	10 - 4	grey	# 56061	01310	50 pcs.	10 - 4	grey	# 56061
	20 pcs.	12 - 6	green	# 56010		20 pcs.	12 - 6	black	# 56064		20 pcs.	12 - 6	yellow	# 56084
	20 pcs.	12 - 10	brown	# 56012		20 pcs.	12 - 10	white	# 56066		20 pcs.	12 - 10	red	# 56086
	10 pcs.	12 - 16	white	# 56014		10 pcs.	12 - 16	green	# 56068		10 pcs.	12 - 16	blue	# 56088

Assortment-boxes 0,5-6 mm²

filled with twin cable end sleeves for double cable connection



Part-No.	content				Part-No.	content				Part-No.	content			
01311	50 pcs.	2 - 0,5	white	# 57000	01312	50 pcs.	2 - 0,75	grey	# 57001	01313	30 pcs.	2 - 1,5	black	# 57005
	50 pcs.	2 - 0,75	grey	# 57001		50 pcs.	2 - 1	red	# 57003		30 pcs.	2 - 2,5	blue	# 57007
	50 pcs.	2 - 1	red	# 57003		50 pcs.	2 - 1,5	black	# 57005		20 pcs.	2 - 4	grey	# 57009
	50 pcs.	2 - 1,5	black	# 57005		50 pcs.	2 - 2,5	blue	# 57007		10 pcs.	2 - 6	yellow	# 57010

Assortment-boxes

 filled with uninsulated cable end sleeves DIN 46228 page 1
 with and without crimping tools


Part-No.	dimensions mm	description	content	
10480	245 x 160 x 45	steel sheet varnished assortment box with 6 little, 1 tool partition and following content:	1000 x 0,75 - 6	01211
			1000 x 1,00 - 6	01213
			1000 x 1,50 - 7	01215
			500 x 2,50 - 7	01218
			500 x 4,00 - 9	01220
			500 x 6,00 - 12	01223
			1 x crimping tool	05122
10481	245 x 160 x 45	ditto, but with square crimping tool 05124	1 x square crimping tool	05124
10482	245 x 160 x 45	ditto, but without tool	without tool	
10483	245 x 160 x 45	steel sheet varnished assortment box with 6 little, 1 tool partition and following content:	1000 x 0,50 - 6	01210
			1000 x 0,75 - 6	01211
			1000 x 1,00 - 6	01213
			500 x 1,50 - 7	01215
			500 x 2,50 - 7	01218
			500 x 2,50 - 12	01219
			1 x crimping tool	12637
10484	245 x 160 x 45	ditto, but without tool	without tool	

Part-No.	dimensions mm	description	content	
10485	350 x 160 x 35	steel sheet varnished assortment box with 7 little, 1 tool partition and following content:	1000 x 0,75 - 6	01211
			1000 x 1,00 - 6	01213
			1000 x 1,50 - 7	01215
			500 x 2,50 - 7	01218
			500 x 4,00 - 9	01220
			500 x 6,00 - 12	01223
			500 x 10,00 - 12	01225
			1 x crimping tool	05122
			10486	350 x 160 x 35
10487	350 x 160 x 35	ditto, but without tool	without tool	
10488	350 x 160 x 35	steel sheet varnished assortment box with 12 little, 1 tool partition and following content:	1000 x 0,75 - 6	01211
			1000 x 1,00 - 6	01213
			1000 x 1,50 - 7	01215
			500 x 1,50 - 10	01216
			500 x 2,50 - 7	01218
			500 x 2,50 - 12	01219
			500 x 4,00 - 9	01220
			250 x 6,00 - 12	01223
			100 x 10,00 - 12	01225
			100 x 10,00 - 18	01227
			100 x 16,00 - 12	01228
			100 x 16,00 - 18	01230
1 x crimping tool	05122			
10490	350 x 160 x 35	ditto, but without tool	without tool	

Assortment-boxes

filled with insulated cable end sleeves DIN 46228 page 4 and Twin design with and without crimping tool



Part-No.	dimensions mm	description	content	
10491	245 x 160 x 45	steel sheet varnished assortment box with 6 little, 1 tool partition and following content:	300 x 0,75 - 8	56081
			300 x 1,00 - 8	56002
			300 x 1,50 - 8	56003
			200 x 2,50 - 8	56058
			200 x 4,00 - 10	56061
			100 x 6,00 - 12	56084
			1 x crimping tool	05122
10492	245 x 160 x 45	ditto, but with square crimping tool 05124	1 x square crimping tool	05124
10493	245 x 160 x 45	ditto, but without tool	without tool	
10494	245 x 160 x 45	steel sheet varnished assortment box with 6 little, 1 tool partition and following content:	200 x 2 x 0,50 - 8	57000
			200 x 2 x 0,75 - 8	57001
			200 x 2 x 1,00 - 8	57003
			200 x 2 x 1,50 - 8	57005
			200 x 2 x 2,50 - 10	57007
			200 x 2 x 4,00 - 12	57009
			1 x crimping tool	12646
10495	245 x 160 x 45	ditto, but without tool	without tool	

Part-No.	dimensions mm	description	content	
10496	350 x 160 x 35	steel sheet varnished assortment box with 7 little, 1 tool partition and following content:	300 x 0,75 - 8	56081
			300 x 1,00 - 8	56002
			300 x 1,50 - 8	56003
			200 x 2,50 - 8	56058
			200 x 4,00 - 10	56061
			100 x 6,00 - 12	56084
			50 x 10,00 - 12	56086
			1 x crimping tool	05122
10497	350 x 160 x 35	ditto, but with square crimping tool 12640	1 x square crimping tool	12640
10498	350 x 160 x 35	ditto, but without tool	without tool	
10499	350 x 160 x 35	steel sheet varnished assortment box with 12 little, 1 tool partition and following content:	100 x 0,75 - 8	56081
			100 x 1,00 - 8	56002
			100 x 1,50 - 8	56003
			100 x 1,50 - 10	56003/1
			100 x 2,50 - 8	56058
			100 x 2,50 - 12	56059
			100 x 4,00 - 10	56061
			50 x 6,00 - 12	56084
			50 x 10,00 - 12	56086
			50 x 10,00 - 18	56087
			50 x 16,00 - 12	56088
50 x 16,00 - 18	56089			
1 x crimping tool	05122			
10500	350 x 160 x 35	ditto, but without tool	without tool	

Assortment-boxes with crimping tool and insulated cable end sleeves



Part-No.	dimensions mm	description	content		
05145	235 x 185 x 47	Insulated cable end sleeves in usual trade design in a plastic suitcase with 5 little and 1 tool partition and a handy crimping tool in a cross section range 0,25-6 mm ² with square crimping	100 x 8 - 0,5	white	56000
			100 x 8 - 0,75	blue	56001
			100 x 8 - 1	red	56002
			100 x 8 - 1,5	black	56003
			100 x 8 - 2,5	grey	56006
			1 x crimping tool		05141
05146	235 x 185 x 47	Insulated cable end sleeves in usual trade design in a plastic suitcase with 5 little and 1 tool partition and a handy crimping tool in a cross section range 0,25-6 mm ² with square crimping	100 x 8 - 0,5	orange	56045
			100 x 8 - 0,75	white	56048
			100 x 8 - 1	yellow	56052
			100 x 8 - 1,5	red	56055
			100 x 8 - 2,5	black	56058
			1 x crimping tool		05141
05147	235 x 185 x 47	Insulated cable end sleeves in usual trade design in a plastic suitcase with 5 little and 1 tool partition and a handy crimping tool in a cross section range 0,25-6 mm ² with square crimping	100 x 8 - 0,5	white	56000
			100 x 8 - 0,75	grey	56081
			100 x 8 - 1	red	56002
			100 x 8 - 1,5	black	56003
			100 x 8 - 2,5	blue	56058
			1 x crimping tool		05141
05148	235 x 185 x 47	Insulated cable end sleeves in usual trade design in a plastic suitcase with 5 little and 1 tool partition and a handy crimping tool in a cross section range 0,25-6 mm ² with square crimping	100 x 8 - 0,5	white	56000
			100 x 8 - 1,5	black	56003
			100 x 8 - 2,5	grey	56006
			50 x 10 - 4	orange	56008
			40 x 12 - 6	green	56010
			1 x crimping tool		05141
05149	235 x 185 x 47	Insulated cable end sleeves in usual trade design in a plastic suitcase with 5 little and 1 tool partition and a handy crimping tool in a cross section range 0,25-6 mm ² with square crimping	100 x 8 - 0,5	orange	56045
			100 x 8 - 1,5	red	56055
			100 x 8 - 2,5	blue	56058
			50 x 10 - 4	grau	56061
			40 x 12 - 6	black	56064
			1 x crimping tool		05141
05150	235 x 185 x 47	Insulated cable end sleeves in usual trade design in a plastic suitcase with 5 little and 1 tool partition and a handy crimping tool in a cross section range 0,25-6 mm ² with square crimping	100 x 8 - 0,5	white	56000
			100 x 8 - 1,5	black	56003
			100 x 8 - 2,5	blue	56058
			50 x 10 - 4	grey	56051
			40 x 12 - 6	yellow	56084
			1 x crimping tool		05141
05151	235 x 185 x 47	Insulated cable end sleeves in usual trade design in a plastic suitcase with 5 little and 1 tool partition and a handy crimping tool in a cross section range 0,25-6 mm ² with square crimping	100 x 2 x 0,5	white	57000
			100 x 2 x 0,75	grey	57001
			100 x 2 x 1	red	57003
			75 x 2 x 1,5	black	57005
			50 x 2 x 2,5	blue	57007
			1 x crimping tool		05141