


1. ELECTRICAL CONNECTION- AND INSTALLATION TECHNIQUE

1.2 Uninsulated cable lugs and connectors

druseidt cable lugs and connectors acc. to the described chapter 1.2 are manufactured acc. to DIN 46234, DIN 46230 and DIN 46341 design A + B as well as usual in trade designs. They are applicable for stranded, fine stranded and also extremely fine stranded conductors. The cable lugs can be delivered in ring-type, fork-type, pin-type, as well as flag type design.

The connectors as parallel – but also as butt connectors. All terminals are manufactured out of copper with the highest conductivity. They are punched and the connecting sleeves are hard soldered. The tin plated surface offers a protection against oxidation and environmental influences. The crimping procedure should be done by a so called indent-crimping process acc. to the adjoining examples. Please pay attention to the fact that the indenter crimps the connectors only on the soldered seamed side of the crimping sleeves. In the cross-section range of 10 mm² or bigger it is necessary that the used tool left a visible cross-section stamping on the crimping sleeve. Also when working with multi-range tools the stamping has to mark the right range of the conductor cross-section on the crimping sleeve too.

Please notice that the crimpings will be done only with the right and suitable tools and die-sets.

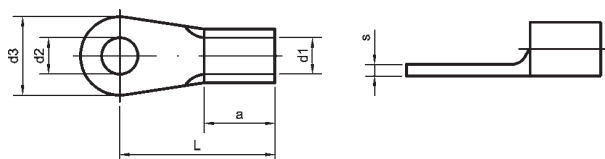


Crimping design:
Indent-crimping

Cable lugs 0,1-35 mm²

DIN 46234 and special design

Material: Cu-HCP, tinned



Part-No.	cross-section mm ²	drilling M	DIN size	d ₁	d ₂	dimensions mm				weight kg/% pcs.	crimping-tools/page no.
						d ₃	L	a	s		
01340	0,1 - 0,5	2	2 - 0,5	1	2,2	5	10	4	0,5	0,21	
01341		3	3 - 0,5		3,2	5	10			0,19	
01342		4	4 - 0,5		4,3	6,5	12			0,24	
01343		5	5 - 0,5		5,3	8	11			0,24	
01345	0,5 - 1	2	-	1,6	2,2	6	11	5	0,8	0,59	
01346		2,5	2,5 - 1		2,7	6	11	5		0,58	
01347		3	3 - 1		3,2	6	11	5		0,56	
01349		3,5	3,5 - 1		3,7	6	11	5		0,55	
01351		4	-		4,3	6,5	8	4		0,42	
01352		4	-		4,3	7	11	5		0,58	
01353		4	4 - 1		4,3	8	12	5		0,70	
01354		5	-		5,3	8	12	5		0,65	
01355		5	5 - 1		5,3	10	13	5		0,90	
01356		6	-		6,5	10	13	5		0,85	
01357		6	-		6,5	12	17	5		1,10	
01358		8	-		8,4	12	17	5		1,00	
01359	1,5 - 2,5	3	3 - 2,5	2,3	3,2	6	11	5	0,8	0,63	
01360		3,5	3,5 - 2,5		3,7	6	11			0,62	
01362		4	-		4,3	6,8	11			0,63	
01363		4	4 - 2,5		4,3	8	12			0,78	
01364		5	-		5,3	8	12			0,70	
01365		5	5 - 2,5		5,3	10	14			0,90	
01366		6	-		6,5	10	14			0,85	
01367		6	6 - 2,5		6,5	11	16			1,06	
01368		8	8 - 2,5		8,4	14	17			1,30	
01369		10	-		10,5	18	20			2,00	
01370		12	-		13	18	20			1,70	
01371	4 - 6	4	4 - 6	3,6	4,3	8	14	6	1,0	1,40	
01372		5	5 - 6		5,3	10	15			1,60	
01373		6	6 - 6		6,5	11	16			1,70	
01374		8	8 - 6		8,4	14	19			2,20	
01375		10	10 - 6		10,5	18	21			2,80	
01376		12	-		13	18	21			2,50	
01377	10	4	-	4,5	4,3	10	16	8	1,1	2,30	
01378		5	5 - 10		5,3	10	16			2,25	
01379		6	6 - 10		6,5	11	17			2,40	
01380		8	8 - 10		8,4	14	20			2,90	
01381		10	10 - 10		10,5	18	21			3,40	
01382		12	12 - 10		13	22	23			4,20	
01383	16	5	5 - 16	5,8	5,3	11	20	10	1,2	3,90	
01384		6	6 - 16		6,5	11	20			3,80	
01385		8	8 - 16		8,4	14	22			4,30	
01386		10	10 - 16		10,5	18	24			5,00	
01387		12	12 - 16		13	22	26			6,00	
01388	25	5	5 - 25	7,5	5,3	12	25	11	1,5	7,00	
01389		6	6 - 25		6,5	12	25			6,90	
01390		8	8 - 25		8,4	16	25			7,50	
01391		10	10 - 25		10,5	18	26			8,00	
01392		12	12 - 25		13	22	31			9,20	
10080		16	16 - 25		17	28	35			12,50	
01393	35	6	6 - 35	9	6,5	15	26	12	1,6	10,10	
01394		8	8 - 35		8,4	16	26			9,80	
01395		10	10 - 35		10,5	18	27			10,00	
01396		12	12 - 35		13	22	31			12,60	
10085		16	16 - 35		17	28	36			14,70	

 05182 page no. 158; 12430, 12408, 12425 pages no. 158/159; 30446 ab 1,5 mm² page no. 160, 12230 page no. 156 up to 25 mm²

05103 page no. 158

30445 page no. 158

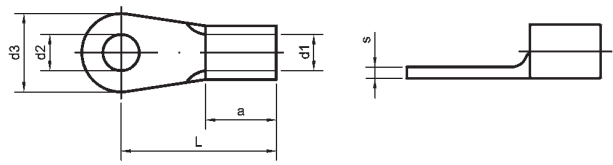
12645/N page no. 158; 12858, 05160 page no. 153

12650 page no. 164; 12655 page no. 165

05126 page no. 153

Tools with exchangeable crimping dies, pages no. 167 - 200

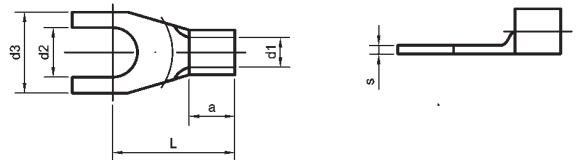
Cable lugs DIN 46234 50-240 mm²



Part-No.	cross-section mm ²	drilling M	DIN size	d ₁	d ₂	d ₃	L	a	s	weight kg/‰ pcs.	crimping-tools/page no.
10090	50	6	6 - 50	11	6,5	18	34	16	1,8	17,00	30460 page no. 167; 12930, 12933 page no. 171; 12748 page no. 179; 14242 page no. 177 14240/41 page no. 177; 13552 page no. 181; 12836 page no. 199 31460 page no. 169 12965/S, 12968 page no. 173; 13551/25, 13551/42, 13537 page no. 183; 12485, 12486, 12487 page no. 199; 12837 page no. 200
01397		8	8 - 50		8,4	18	34			16,50	
01398		10	10 - 50		10,5	18	34			16,00	
01399		12	12 - 50		13	22	36			18,00	
01400		16	16 - 50		17	28	40			21,00	
10091	70	6	-	13	6,5	22	38	18	2	26,00	
01401		8	8 - 70		8,4	22	38			26,00	
01402		10	10 - 70		10,5	22	38			25,00	
01403		12	12 - 70		13	22	38			24,00	
01404		16	16 - 70		17	28	42			27,00	
10092	95	8	8 - 95	15	8,4	24	42	20	2,5	41,00	
01405		10	10 - 95		10,5	24	42			41,00	
01406		12	12 - 95		13	24	42			39,00	
01407		16	16 - 95		17	28	44			41,00	
10093		120	8	8 - 120	17	8,4	24	44	22	3	
01408	10		10 - 120		10,5	24	44			56,00	
01409	12		12 - 120		13	24	44			54,00	
01410	16		16 - 120		17	28	48			58,00	
10095	150		10	10 - 150	19	10,5	30	50	24	3,2	
01411		12	12 - 150		13	30	50			76,00	
01412		16	16 - 150		17	30	50			75,00	
10097	185	10	-	21	10,5	36	50	28	3,5	147,00	
01413		12	12 - 185		13	36	50			147,00	
01414		16	16 - 185		17	36	50			143,00	
01416		240	12	12 - 240	23,5	13	38	56	32	4	235,00
01417	16		16 - 240		17	38	56			234,00	

Cable lugs 0,1-16 mm²

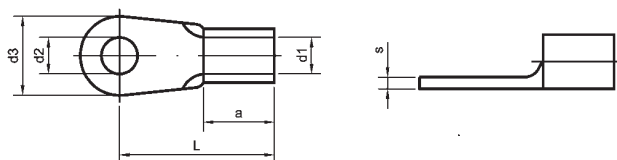
Fork-Type,
Material: Cu-HCP tinned



Part-No.	cross-section mm ²	drilling M	d ₁	d ₂	d ₃	L	a	s	weight kg/‰ pcs.	crimping-tools/page no.
01430	0,1 - 0,5	3	1	3,2	5	10	4	0,5	0,21	05182 page no. 158; 12430, 12408, 12425 pages no. 158/159 30446 from 1,5 mm ² page no. 158 12645/N page no. 158; 12858, 05160 page no. 160 30445 page no. 160 Tools with exchangeable crimping dies, page no. 164 05126 page no. 160
01431	0,5 - 1,0	3	1,6	3,2	6	11	5	0,8	0,56	
01432		3		3,2	6,5	8	4		0,56	
01433		3,5		3,7	6	11	5		0,56	
01434		3,5		3,7	6,5	8	4		0,70	
01435		4		4,3	6,8	11	5		0,70	
01436		4		4,3	8	12	5		0,70	
01437		5		5,3	10	13	5		0,90	
01438		6		6,5	12	17	5		0,76	
01439	1,5 - 2,5	3	2,3	3,2	6	11	5	0,8	0,63	
01440		3,5		3,7	6,8	11			0,63	
01441		4		4,3	6,8	11			0,78	
01442		4		4,3	8	12			0,78	
01443		5		5,3	10	14			0,90	
01444		6		6,5	11	16			1,06	
01445	4 - 6	4	3,6	4,3	8	14	6	1,0	1,40	
01446		5		5,3	10	15			1,60	
01447		6		6,5	11	16			1,70	
01448		8		8,4	14	19			2,20	
01449	10	5	4,5	5,3	10	16	8	1,1	3,90	
01450		6		6,5	11	17			3,80	
01452	16	6	5,8	6,5	11	20	10	1,2	3,80	
01453		8		8,4	14	22			5,00	

Cable lugs 10-300 mm²

Material: Cu-HCP, tinned

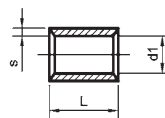


Part-No.	cross-section mm ²	size	dimensions mm						weight kg/‰ pcs.	crimping-tools/page no.
			d ₁	d ₂	d ₃	a	L	s		
01501	10	6 x 4,3	4,3	6,4	11	10	21	1	2,52	isenbej.uo
01502		8 x 4,3		8,4	15		24		3,18	
01503		10 x 4,3		10,5	19		26		4,10	
01504		12 x 4,3		13	22		28		4,50	
01506	16	6 x 5,4	5,4	6,4	11	11,5	24	1	3,46	
01507		8 x 5,4		8,4	15		27		4,20	
01508		10 x 5,4		10,5	19		29		4,90	
01509		12 x 5,4		13	22		31		5,50	
01510	25	6 x 6,8	6,8	6,4	13	13,5	27	1,2	5,91	
01511		8 x 6,8		8,4	15		30		6,50	
01512		10 x 6,8		10,5	19		32		7,50	
01513		12 x 6,8		13	22		35		8,40	
01516	35	8 x 8,2	8,2	8,4	15	16	33	1,5	10,64	
01517		10 x 8,2		10,5	19		35		11,70	
01518		12 x 8,2		13	22		38		13,50	
01521	50	8 x 9,5	9,5	8,4	17	19	36	1,8	16,89	
01522		10 x 9,5		10,5	19		38		17,50	
01523		12 x 9,5		13	22		41		18,90	
01525	70	8 x 11,2	11,2	8,4	21	24	44	2	27,70	
01526		10 x 11,2		10,5	21		44		27,50	
01527		12 x 11,2		13	22		47		29,60	
01528		16 x 11,2		17	28		50		33,10	
01530	95	10 x 13,5	13,5	10,5	21	24	44	2,5	39,20	
01531		12 x 13,5		13	22		47		40,70	
01533	120	12 x 15	15	13	24	29	53	3	63,10	
01534		16 x 15		17	28		55		65,30	
01536	150	12 x 16,5	16,5	13	28	29	55	3,5	84,50	
01537		16 x 16,5		17	28		55		83,20	
01538	185	12 x 18,5	18,5	13	28	34	61	4	116,80	
01539		16 x 18,5		17	28		61		114,40	
01540	240	12 x 21	21	13	30	40	68	5	189,00	
01541		16 x 21		17	30		68		186,00	
01542	300	12 x 23,5	23,5	13	30	40	68	5	200,40	
01543		16 x 23,5		17	30		68		200,40	

Parallel connectors 0,5-150 mm²

DIN 46341 part 1, design A

Material: Cu-HCP, tinned

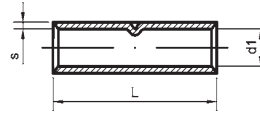


Part-No.	cross-section mm ²	DIN size	dimensions mm			weight kg/‰ pcs.	crimping-tools/page no.
			d ₁	L	s		
01760	0,5 - 1,0	A - 1	1,6	7	0,8	0,40	crimping-tools page no. 153, 156, 157, 158, 159, 164, 165, 167, 169, 181, 183, 199
01761	1,5 - 2,5	A - 2,5	2,3	7	0,8	0,50	
01762	4 - 6	A - 6	3,6	7	1	0,90	
01763	10	A - 10	4,6	9	1,1	1,64	
01764	16	A - 16	5,9	10	1,2	2,52	
01765	25	A - 25	7,7	12,5	1,5	5,17	
01766	35	A - 35	9,2	14	1,6	7,22	
01767	50	A - 50	11,2	17,5	1,8	12,56	
01768	70	A - 70	13,5	18	2	16,56	
01769	95	A - 95	15	19	2,5	24,43	
01770	120	A - 120	16,7	21	3	37,70	
01771	150	A - 150	19	25	3,2	50,24	

Butt connectors 0,5-150 mm²

DIN 46341 part 1, design B

Material: Cu-HCP, tinned

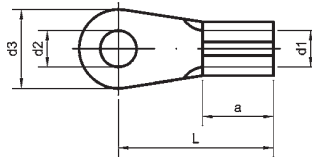


Part-No.	cross-section mm ²	DIN size	dimensions mm			weight kg/‰ pcs.	crimping-tools/page no.
			d ₁	L	s		
01740	0,5-1,0	B - 1	1,6	15	0,8	0,90	crimping-tools page no. 153, 156, 157, 158, 159, 164, 165, 167, 169, 171, 177, 181, 183, 199
01741	1,5-2,5	B - 2,5	2,3	15	0,8	1,10	
01742	4-6	B - 6	3,6	15	1	2,60	
01743	10	B - 10	4,6	20	1,1	3,64	
01744	16	B - 16	5,9	26	1,2	6,14	
01745	25	B - 25	7,7	29	1,5	11,33	
01746	35	B - 35	9,2	32	1,6	15,34	
01747	50	B - 50	11,2	38	1,8	24,44	
01748	70	B - 70	13,5	42	2	37,36	
01749	95	B - 95	15	48	2,5	60,80	
01750	120	B - 120	16,7	52	3	86,68	
01751	150	B - 150	19	56	3,2	112,50	

Solder tags 0,5-95 mm²

DIN 46211 design A and special design

Material: brass, tinned

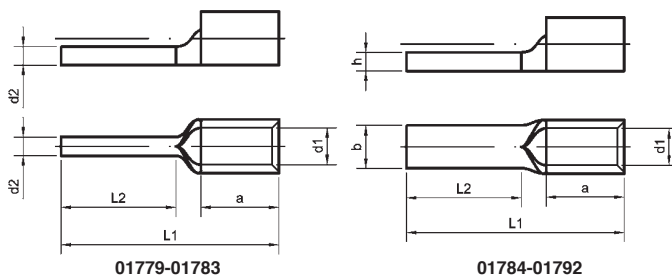


Part-No.	cross-section mm ²	drilling M	DIN size	dimensions mm					weight kg/‰ pcs.
				d ₁	d ₂	d ₃	a	L	
03331	0,5-1,0	3	3 x 1,4	1,4	3,2	6	3,5	10	0,25
03332		4	4 x 1,4		4,3	8		11,5	0,32
03333		5	5 x 1,4		5,3	10		13	0,42
03336	1,5-2,5	4	4 x 2,3	2,3	4,3	8	6	14,5	0,90
03337		5	5 x 2,3		5,3	10		16	1,10
03338		6	6 x 2,3		6,5	11		17	1,14
03339		8	8 x 2,3		8,4	15		20	1,65
03341		4-6	5	5 x 3,4	3,4	5,3	10	8	18
03342	6		6 x 3,4		6,5	11		19	1,90
03343	8		8 x 3,4		8,4	15		23	2,70
03344	10		10 x 3,4		10,5	19		24	3,30
03346	10	5	5 x 4,3	4,3	5,3	10	10	19	3,00
03347		6	6 x 4,3		6,5	11		21	3,10
03348		8	8 x 4,3		8,4	15		24	4,00
03349		10	10 x 4,3		10,5	19		26	4,90
03351		16	6	6 x 5,4	5,4	6,5	11	11,5	24
03352	8		8 x 5,4		8,4	15		27	6,10
03353	10		10 x 5,4		10,5	19		29	7,30
03354	12		12 x 5,4		13	22		31	8,50
03355	25	6	6 x 6,8	6,8	6,5	13	13,5	27	9,00
03356		8	8 x 6,8		8,4	15		30	10,00
03357		10	10 x 6,8		10,5	19		32	11,10
03358		12	12 x 6,8		13	22		35	12,50
03360		35	8	8 x 8,2	8,2	8,4	15	16	33
03361	10		10 x 8,2		10,5	19		35	15,70
03362	12		12 x 8,2		13	22		38	17,40
03365	50	8	8 x 9,5	9,5	8,4	17	19	36	23,60
03366		10	10 x 9,5		10,5	19		38	24,50
03367		12	12 x 9,5		13	22		41	26,70
03369		70	10	10 x 11,2	11,2	10,5	21	24	44
03370	12		12 x 11,2		13	22		47	43,50
03372	95	10	10 x 13,5	13,5	10,5	21	24	44	54,40
03373		12	12 x 13,5		13	22		47	55,40

Pin connectors 0,5-95 mm²

DIN 46230 and special design

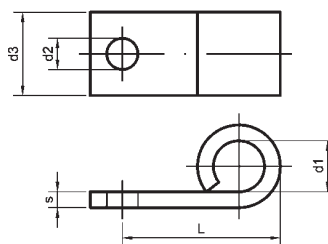
Material: Cu-ETP, tinned



Part-No.	cross-section mm ²	DIN size	dimensions							weight kg/% pcs.	crimping-tools/page no.
			d ₁	d ₂	b	h	a	L ₁	L ₂		
01779	0,1-0,5	A 0,5	1	1,4	-	-	4	14	8	0,20	crimping-tools page no. 153, 156, 157, 158, 159, 164, 165, 167, 169, 171, 177, 181, 183, 199
01780	0,5-1,0	A 1	1,6	1,9	-	-	5	17	10	0,60	
01781	1,5-2,5	-	2,3	1,9	-	-	5	13,5	5	0,54	
01782	1,5-2,5	A 2,5	2,3	1,9	-	-	5	17	10	0,65	
01783	4-6	A 6	3,6	2,7	-	-	6	20	11	1,61	
01784	10	-	4,5	-	4,3	2,4	10	24,5	11	2,63	
01785	10	B 10	4,5	-	4,5	2	8	22	12	2,60	
01786	16	-	5,4	-	5,5	2	11,5	29,5	15	3,89	
01787	16	B 16	5,8	-	5,5	2,6	10	26	13	4,40	
01788	25	-	6,7	-	6,8	2,4	13,5	33,5	15	6,30	
01789	35	-	8,4	-	8	3,2	16	40,5	20	11,70	
01790	50	-	9,5	-	9,5	3,6	19	45	20	17,87	
01791	70	-	11,2	-	11	4	24	55	23	29,20	
01792	95	-	13,5	-	12,5	5	24	55	23	42,90	

Flag type cable lugs 10-150 mm²

Material : Cu-ETP, tinned and soldered



Part-No.	cross-section mm ²	drilling M	dimensions mm					weight kg/% pcs.	crimping-tools/page no.
			d ₁	d ₂	d ₃	L	s		
10118	10	5	5	5,3	10,5	20	1,2	0,45	on request
01553		6		6,5	10,5	17		0,41	
01554		8		8,4	17	17		0,34	
01555	16	6	5,5	6,5	16	19	1,2	0,75	
01556		8		8,4	16	19		0,72	
01557		10		10,5	21	20		1,00	
01558		12		13	21	20		0,95	
01559	25	6	7	6,5	18	21	1,5	1,15	
01560		8		8,4	18	23		1,20	
10120		10		10,5	24	23		1,94	
01561	35	8	8,5	8,4	20	23	1,7	1,56	
01562		10		10,5	20	26		1,70	
01563		12		13	20	26		1,62	
01564	50	8	10	8,4	23	30	2	2,82	
01565		10		10,5	23	30		2,64	
10125		12		13	23	28		2,40	
01566	70	8	12	8,4	26	32	2,5	4,00	
01567		10		10,5	26	32		3,60	
01568		12		13	26	33		3,40	
01569	95	12	13,5	13	27	36	2,5	5,25	
01570	120	12	15	13	27	40	3	7,20	
01571	150	12	17	13	30	40	3,2	8,40	
01572		16		17	30	40		8,35	

1. ELECTRICAL CONNECTION- AND INSTALLATION TECHNIQUE

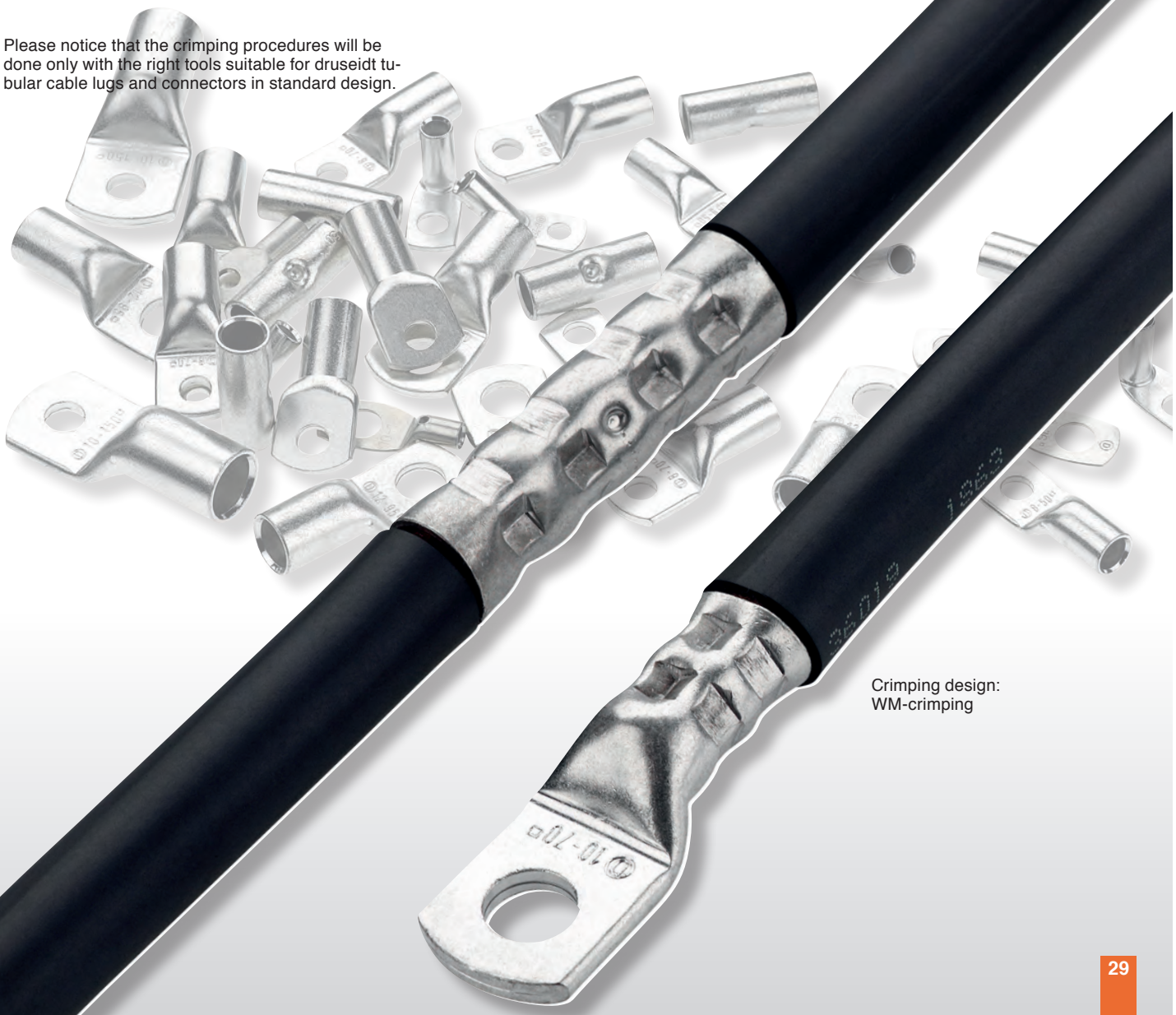
1.3 Uninsulated tubular cable lugs and connectors, druseidt standard design

druseidt delivers tubular cable lugs and connectors made out of copper in different tube dimensions. So the following described standard design, made out of copper tube HCP resp. ETP acc. to DIN 13600, are delivered since decades. The surface of all terminals are tin plated and protect them against environmental influences and corrosion.

Material with exact dimension (diameter/thickness) and the manufacturing of correct fitted connectors guarantee an optimal and safety processability of all druseidt cable lugs. The crimping procedure should be done by a so called WM-crimping. This crimping design enables an intensive compressing to the center of the conductor, also when working with fine stranded cables.

Please notice that the crimping procedures will be done only with the right tools suitable for druseidt tubular cable lugs and connectors in standard design.

The number of the crimping procedures depends on the crimping width resp. the cross-section and the length of the connector sleeve. More detailed information are given on the catalogue page 202. druseidt tubular cable lugs and connectors are suitable for application up to a temperature of + 120° C (cf DIN 46234 too).



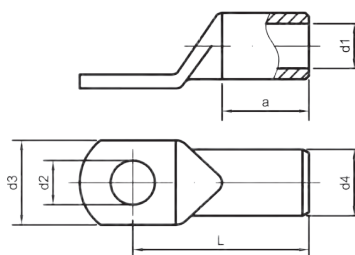
Crimping design:
WM-crimping

Tubular cable lugs 0,75-50 mm²

druseidt standard design,

Material: Cu-HCP DIN EN 13600

Surface: tinned



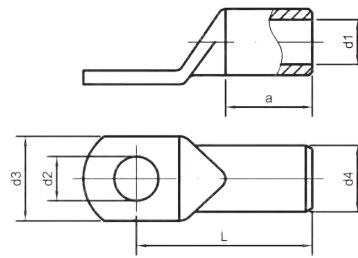
Part-No.		cross-section mm ²	drilling M	dimensions mm						weight kg/% pcs.	crimping-tools/page no.
without inspection hole	with inspection hole			d ₁	d ₂	d ₃	d ₄	L	a		
01580	-	0,75	3	1,4	3,2	6,5	3	12,5	6	0,71	30445 0,75-10 mm ² , 30446 1,5-16 mm ² page no. 160
01581	-		4		4,3	8,5		14		0,80	
01582	-		5		5,3	10		15		1,00	
01583	-	1,5	3	1,9	3,2	6,5	3,9	14	6	1,18	
01584	-		4		4,3	8,5		15		1,34	
01585	-		5		5,3	10		16		1,45	
01586	-		6		6,4	11		18		1,69	
01588	-	2,5	4	2,4	4,3	8,5	4,4	15	6,5	1,57	
01589	-		5		5,3	10		16		1,72	
01590	-		6		6,4	11		18		1,92	
01591	-		8		8,4	13		20		2,20	
01592	-	4	4	3	4,3	8,5	5	17	8	2,20	
01593	-		5		5,3	10		18		2,40	
01594	-		6		6,4	11		20		2,60	
01595	-		8		8,4	14		22		3,00	
01596	-	6	4	3,7	4,3	8,5	5,5	17,5	8	2,40	
01597	-		5		5,3	10		19		2,60	
01598	-		6		6,4	11		21		2,80	
01599	-		8		8,4	14		23		3,00	
10129	10156	10	4	4,3	4,3	10	6,7	19,5	10	4,10	
01600	01680		5		5,3	10		20,5		4,30	
01601	01681		6		6,4	11		22,5		4,80	
01602	01682		8		8,4	15		25		5,30	
01603	01683		10		10,5	18		27,5		5,70	
01604	01684		12		13	19		28,5		5,80	
01605	01685	16	5	5,4	5,3	12	7,8	22,5	11	5,70	
01606	01686		6		6,4	12		24,5		6,40	
01607	01687		8		8,4	15		26,5		6,70	
01608	01688		10		10,5	18		29		7,20	
01609	01689		12		13	20		30		7,20	
10130	-	25	5	6,9	5,3	14	9,4	25	13	8,70	
01610	01690		6		6,4	14		27		9,50	
01611	01691		8		8,4	15		29		10,10	
01612	01692		10		10,5	18		31,5		10,90	
01613	01693		12		13	20		32,5		10,80	
10132	10158		14		15	22		34,5		11,60	
10133	10159	35	5	8,3	5,3	16,5	11,3	32,5	16	16,00	
01614	01694		6		6,4	16,5		32,5		16,00	
01615	01695		8		8,4	16,5		33		16,20	
01616	01696		10		10,5	18		35,5		18,00	
01617	01697		12		13	20		36,5		17,00	
10134	10160		14		15	22		39		18,70	
10135	10162		16		17	26		41,5		19,70	
10140	10163	50	6	9,6	6,4	19	13,1	36	18	23,50	
01618	01698		8		8,4	19		37		24,10	
01619	01699		10		10,5	20		39		25,30	
01620	01700		12		13	23		40,5		26,10	
10136	10164		14		15	25		42,5		27,90	
01621	01701		16		17	27		45,5		29,40	
10137	10165		20		21	28		50		35,70	

12375, 12376 page no. 161; 12655 page no. 165

 12377 page no. 161; 12869 page no. 162; 12724 page no. 190; 30460 page no. 167; 31460 page no. 169;
 12930, 12933 page no. 171;
 12766 page no. 172; 12965/S, 12968 page no. 173; 14240/41 page no. 177; 12748 page no. 179;
 13552 page no. 181; 13551/25, 13551/42, 13557 page no. 183; 12725 page no. 186; 12728 page no. 188;
 12836, 12485-87, 05256 page no. 199; 12837 page no. 200

Tubular cable lugs 70-630 mm²

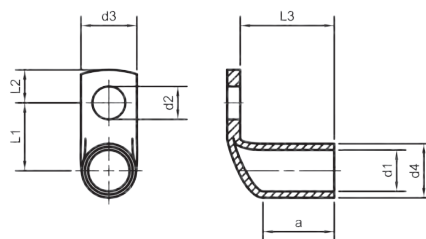
druseidt standard design,
Material: Cu-HCP DIN EN 13600
Surface: tinned



Part-No.		cross-section mm ²	drilling M	dimensions mm						weight kg/‰ pcs.	crimping-tools/page no.	
without inspection hole	with inspection hole			d ₁	d ₂	d ₃	d ₄	L	a			
10138	10166	70	6	11,5	6,4	22,5	15,3	41	21	34,60	05256 page no. 199 12869 page no. 162 12766 page no. 172; 12965/5, 12968 page no. 173; 14240/41 page no. 177; 12748 page no. 179; 13552 page no. 181; 12724 page no. 190 13551/25; 13551/42, 13537 page no. 183; 12836, 12485-87 page no. 199; 12837 page no. 200 31460 page no. 169; 12930, 12933 page no. 171; 12728 page no. 188 12377 page no. 161; 30460 page no. 167; 12725 page no. 186	
01622	01702		8	8	8,4	22,5			41			34,60
01623	01703		10	10	10,5	22,5			42,5			36,30
01624	01704		12	12		13	23		43,5			36,40
10139	10167		14	14		15	26		46			39,30
01625	01705		16	16		17	28		48,5			40,20
10141	10168		20	20		21	29		53			42,10
10143	10169	95	6	13,5	6,4	25	17,5	46	23	47,10		
01626	01706		8	8	8,4	25			45,5			47,60
01627	01707		10	10	10,5	25			47			48,20
01628	01708		12	12		13	26		47			48,20
10144	10170		14	14		15	26		49			51,60
01629	01709		16	16		17	28		50			51,50
10146	10171		20	20		21	31		54,5			56,60
10147	10172	120	8	15,5	8,4	29	20	50,5	26	66,00		
01630	01710		10	10	10,5	29			53			71,30
01631	01711		12	12		13	29		52,5			71,40
10148	10173		14	14		15	29		53,5			72,40
01632	01712		16	16		17	29		55			73,10
01633	01713		20	20		21	35		60			78,10
01634	01714		150	10	16,8	10,5	31	21,3	56,5	29		83,40
01635	01715	12		12		13	31		56			81,80
10149	10174	14		14		15	31		57			83,30
01636	01716	16		16		17	31		58			85,00
01637	01717	20		20		21	35		63			88,40
10145	10175	185		10	19	10,5	35	24	59	30		106,10
01638	01718			12	12		13	35		58,5		
10151	10176		14	14		15	35		61			107,20
01639	01719		16	16		17	35		63		108,60	
01640	01720		20	20		21	35		66		113,30	
10152	10177		240	10	21	10,5	38	26	67	35	129,70	
01641	01721			12	12		13	38		67		130,20
10153	10178	14		14		15	38		69		133,60	
01642	01722	16		16		17	38		69,5		138,40	
01643	01723	20		20		21	38		71		139,50	
01644	01724	300		12	24	13	44	30	82	42	217,20	
10154	10190			14	14		15	44		84		221,90
01645	01725		16	16		17	44		85		219,40	
01646	01726		20	20		21	44		85		229,20	
10155	-		400	10	27,5	10,5	49	33,5	92	47	279,00	
10150	-			12	12		13	49		92		279,00
01647	-			16	16		17	49		92		279,00
01648	-	20		20		21	49		92		281,90	
01649	-	500		16	31	17	55,5	38	113	70	493,80	
01650	-			20	20		21	55,5		113		485,60
01651	-	630		16	34	17	60	41	115	70	513,50	
01652	-		20	20		21	60		115		506,00	

Tubular cable lugs 0,75-150 mm² druseidt standard design Angle type 90°

Material: Cu-HCP DIN EN 13600 Surface: tinned



Part-No.		cross-section mm ²	drilling M	dimensions mm								weight kg/% pcs.	crimping-tools/page no.
without inspection hole	with inspection hole			d ₁	d ₂	d ₃	d ₄	L ₁	L ₂	L ₃	a		
10400	-	0,5-0,75	3	1,4	3,2	6,5	3	7,5	4	9,5	5	0,90	30445 0,75-10 mm ² , 30446 1,5-16 mm ² page no. 160
10402	-		4		4,3	8,5		8,5	5			1,00	
10404	-		5		5,3	10		9,5	5,5			1,00	
10406	-	1-1,5	3	1,9	3,2	6,5	3,9	8	4	9,5	5	1,60	
10408	-		4		4,3	8,5		9	5			1,60	
10410	-		5		5,3	10		10	5,5			1,60	
10412	-		6		6,4	11		12	7,5			1,60	
10414	-	2,5	4	2,4	4,3	8,5	4,4	9,2	5	9,5	5,5	1,83	
10416	-		5		5,3	10		10,2	5,5			1,84	
10418	-		6		6,4	11		12,2	7,5			2,20	
10420	-		8		8,4	14		14,2	10			2,30	
10422	-	4	4	3	4,3	8,5	5	9,5	5	10,5	7	2,50	
10424	-		5		5,3	10		10,5	5,5			2,41	
10426	-		6		6,4	11		12,5	7,5			2,90	
10428	-		8		8,4	14		14,5	10	11,5		3,00	
10430	-	6	4	3,7	4,3	8,5	5,5	9,8	5	10,5	7	2,70	
10432	-		5		5,3	10		10,8	5,5			2,52	
10434	-		6		6,4	11		12,8	7,5			2,82	
10436	-		8		8,4	14		14,8	10			3,40	
10438	10838	10	5	4,3	5,3	10	6,7	11,4	5,5	15	9	4,90	
01800	01850		6		6,4	11		13,4	7,5			5,30	
01801	01851		8		8,4	15		15,4	10			5,40	
01802	01852		10		10,5	18		17,4	12			6,30	
01803	01853		12		13	20		18,4	13			5,61	
10440	10840	16	5	5,4	5,3	11	7,8	11,9	5,5	16,5	10	6,55	
01804	01854		6		6,4	11,5		13,9	7,5			6,96	
01805	01855		8		8,4	15		15,9	10			8,20	
01806	01856		10		10,5	18		17,9	12			8,20	
01807	01857		12		13	20		18,9	13			7,78	
01808	01858	25	6	6,9	6,4	14	9,4	14,7	7,5	21	12	11,27	
01809	01859		8		8,4	15		16,7	10			12,15	
01810	01860		10		10,5	18		18,7	12			11,84	
01811	01861		12		13	20		19,7	13			12,40	
01812	01862	35	6	8,3	6,4	16,5	11,3	16,2	7,5	21	15	17,64	
01813	01863		8		8,4	16,5		18,2	10			17,26	
01814	01864		10		10,5	18		20,2	12			18,00	
01815	01865		12		13	20		21,2	13			18,00	
10441	10841	50	6	9,6	6,4	19	13,1	17,1	7,5	26	17	26,28	
01816	01866		8		8,4	19		19,1	10			26,70	
01817	01867		10		10,5	20		21,1	12			29,90	
01818	01868		12		13	23		23,5	13			30,00	
10442	10842		16		17	27		25,1	16			30,00	
01819	01869	70	8	11,5	8,4	22	15,3	20,2	10	23,9	20	36,56	
01820	01870		10		10,5	22		22,2	12			38,38	
01821	01871		12		13	23		23,2	13			38,30	
10443	10843		16		17	27		26,2	16			39,46	
01822	01872	95	8	13,5	8,4	25	17,5	21,3	10	28	22	48,69	
01823	01873		10		10,5	25		23,3	12			52,70	
01824	01874		12		13	25		24,3	13			50,63	
10444	10844		16		17	28		27,3	16			52,51	
01825	01875	120	10	15,5	10,5	29	20	25	12	32	25	74,00	
01826	01876		12		13	29		26	13			73,25	
01827	01877		16		17	29		28,5	16			72,95	
01828	01878	150	10	16,8	10,5	31	21,3	25,7	12	34	28	80,70	
01829	01879		12		13	31		26,7	13			82,90	
01830	01880		16		17	31		29,7	16			85,00	
10445	10845		20		21	35		33,7	19			88,90	

31460 page no. 169; 12930, 12933 page no. 171; 12766 page no. 172; 12869 page no. 162; 12724 page no. 190; 12965/S; 12968 page no. 173; 14240/41 page no. 177; 12748 page no. 179; 13552 page no. 181; 13551/25; 13551/42; 13537 page no. 183; 12728 page no. 188; 12836; 12485-87; 05256 page no. 199; 12837 page no. 200

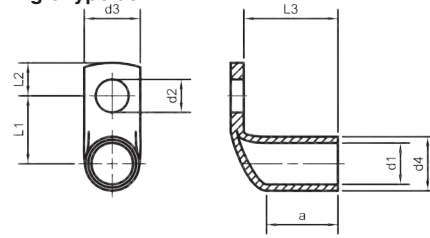
12377 page no. 161; 30460 page no. 167; 12725 page no. 186

12376 page no. 161

12375 page no. 159; 12655 page no. 165

Tubular cable lugs 185-300 mm² druseidt standard design Angle type 90°

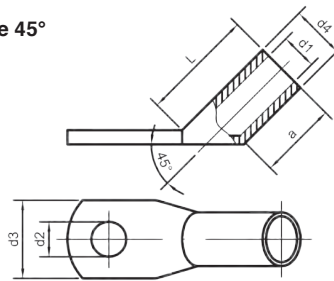
Material: Cu-HCP DIN EN 13600 Surface: tinned



Part-No.		cross-section mm ²	drilling M	dimensions mm								weight kg/‰ pcs.	crimping-tools/page no.
without inspection hole	with inspection hole			d ₁	d ₂	d ₃	d ₄	L ₁	L ₂	L ₃	a		
10446	10846	185	10	19	10,5	35	24	27	12	34,8	29	99,00	31460 page no. 169; 12930, 12933 page no. 171; 12766 page no. 172; 12965/S, 12968 page no. 173; 14240/41 page no. 177; 12748 page no. 179; 13552 page no. 181; 13551/25, 13551/42, 13537 page no. 183; 12728 page no. 188; 12836, 12485-87, 05256 page no. 199; 12837 page no. 200 12869 page no. 162 12724 page no. 190
01831	01881		12		13	35		28	13			101,40	
01832	01882		16		17	35		31	16			111,50	
01833	01883		20		21	35		35	19			115,80	
01834	01884	240	12	21	13	38	26	29	13	43	34	126,85	
01835	01885		16		17	38		32	16			134,55	
01836	01886		20		21	38		36	19			140,25	
01838	01888	300	12	24	13	43	30	31	13	51	41	198,20	
01840	01890		16		17	43		34	16			209,00	
01842	01892		20		21	43		38	19			218,10	

Tubular cable lugs 10-240 mm² druseidt standard design Angle type 45°

Material: Cu-HCP DIN EN 13600 Surface: tinned

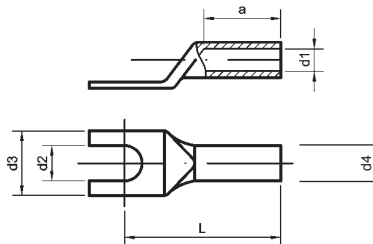


Part-No.	cross-section mm ²	drilling M	dimensions mm				L	a	weight kg/‰ pcs.	crimping-tools/page no.
			d ₁	d ₂	d ₃	d ₄				
10438/S-45	10	5	4,3	5,3	10	6,7	15	9	4,90	31460 page no. 169; 12930, 12933 page no. 171; 12766 page no. 172; 12965/S, 12968 page no. 173; 14240/41 page no. 177; 12748 page no. 179; 13552 page no. 181; 13551/25, 13551/42, 13537 page no. 183; 12728 page no. 188; 12836, 12485-87, 05256 page no. 199; 12837 page no. 200; 12869 page no. 162; 12724 page no. 190
01800/S-45		6		6,4	11				5,40	
01801/S-45		8		8,4	15				5,90	
01804/S-45	16	6	5,4	6,4	11,5	7,8	16,5	10	6,90	
01805/S-45		8		8,4	15				7,08	
01806/S-45		10		10,5	18				8,20	
01808/S-45	25	6	6,9	6,4	14	9,4	20	12	10,44	
01809/S-45		8		8,4	15				11,30	
01810/S-45		10		10,5	18				11,97	
01811/S-45		12		13	20				12,17	
01812/S-45	35	6	8,3	6,4	16,5	11,3	24,5	15	18,09	
01813/S-45		8		8,4	16,5				18,75	
01814/S-45		10		10,5	18				19,51	
01815/S-45		12		13	20				19,73	
01816/S-45	50	8	9,6	8,4	19	13,1	28,5	17	28,50	
01817/S-45		10		10,5	20				32,70	
01818/S-45		12		13	23				34,14	
01819/S-45	70	8	11,5	8,4	22	15,3	33	20	40,24	
01820/S-45		10		10,5	22				42,96	
01821/S-45		12		13	23				42,48	
01822/S-45	95	8	13,5	8,4	25	17,5	38	22	53,80	
01823/S-45		10		10,5	25				56,80	
01824/S-45		12		13	25				57,40	
01825/S-45	120	10	15,5	10,5	29	20	43,5	25	83,25	
01826/S-45		12		13	29				81,50	
01827/S-45		16		17	29				85,92	
01828/S-45	150	10	16,8	10,5	31	21,3	47,5	28	98,70	
01829/S-45		12		13	31				96,80	
01830/S-45		16		17	31				101,20	
01831/S-45	185	12	19	13	35	24	51	29	122,90	
01832/S-45		16		17	35				119,60	
01833/S-45		20		21	35				139,90	
01834/S-45	240	12	21	13	38	26	61	34	155,80	
01835/S-45		16		17	38				165,10	
01836/S-45		20		21	38				170,40	

Tubular cable lugs 0,5-16 mm²

druseidt standard design, Forktype

Material: Cu-ETP resp. HCP DIN EN 13600 Surface: tinned



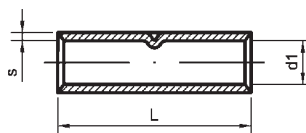
Part-No.	cross-section mm ²	drilling M	dimensions mm				L	a	weight kg/‰ pcs.	crimping-tools/page no.			
			d ₁	d ₂	d ₃	d ₄							
02100	0,5-0,75	3	1,4	3,2	6,5	3	12,5	6	0,70	30445 page no. 160			
02101		4		4,3	8,5		14		0,70				
02102		5		5,3	10		15		0,75				
02105	1,0-1,5	4	1,9	4,3	8,5	3,9	15	6	1,17		30446 page no. 160		
02106		5		5,3	10		16		1,30				
02107		6		6,4	11		18		1,39				
02110	2,5	4	2,4	4,3	8,5	4,4	15	6,5	1,48			12655 page no. 165	
02111		5		5,3	10		16		1,55				
02112		6		6,4	11		18		1,63				
02113		8		8,4	13		20		1,91				30460 page no. 167; 31460 page no. 169; 12930, 12933 page no. 171; 12725 pmo. 186; 12869 pmo. 162 12728 pmo. 188; 12724 pmo. 190
02115	4	4	3	4,3	8,5	5	17	8	1,81				
02116		5		5,3	10		18		2,06				
02117		6		6,4	11		20		2,16				
02118		8		8,4	14		22		2,31	30460 page no. 167; 31460 page no. 169; 12930, 12933 page no. 171; 12725 pmo. 186; 12869 pmo. 162 12728 pmo. 188; 12724 pmo. 190			
02121	6	4	3,7	4,3	8,5	5,5	17,5	8	2,07				
02122		5		5,3	10		19		2,25				
02123		6		6,4	11		21		2,49				
02124		8		8,4	14		23		2,58		30460 page no. 167; 31460 page no. 169; 12930, 12933 page no. 171; 12725 pmo. 186; 12869 pmo. 162 12728 pmo. 188; 12724 pmo. 190		
02127	10	5	4,3	5,3	10	6,7	20,5	10	3,96				
02128		6		6,4	11		22,5		4,17				
02129		8		8,4	15		25		4,57				
02132	16	5	5,4	5,3	12	7,8	22,5	11	5,25			30460 page no. 167; 31460 page no. 169; 12930, 12933 page no. 171; 12725 pmo. 186; 12869 pmo. 162 12728 pmo. 188; 12724 pmo. 190	
02133		6		6,4	12		24,5		5,56				
02134		8		8,4	15		26,5		6,00				
02137	16f	5	6	5,3	14	9	25,5	13	8,24				
02138		6		6,4	14		27		8,60				
02139		8		8,4	15		29,5		9,37				

Butt connectors 0,5-630 mm²

druseidt standard design

Material: Cu-ETP resp. HCP DIN EN 13600

Surface: tinned



Part-No.	cross-section mm ²	d ₁	dimensions mm		weight kg/‰ pcs.	crimping-tools/page no.
			L	s		
13686	0,5-0,75	1,4	15	0,8	0,80	page no. 160-162 165-200
13687	1,0-1,5	1,9	15	1	1,20	
13688	2,5	2,4	16	1	1,50	
13689	4	3	19	1	2,10	
13690	6	3,7	19	0,9	2,20	
13691	10	4,3	30	1,2	5,52	
13692	16	5,4	35	1,2	8,00	
13693	25	6,9	40	1,25	11,74	
13694	35	8,3	45	1,5	19,12	
13695	50	9,6	50	1,75	27,00	
13696	70	11,5	55	1,9	39,00	
13697	95	13,5	60	2	50,00	
13698	120	15,5	65	2,25	71,90	
13699	150	16,8	70	2,25	86,50	
01752	185	19	75	2,5	116,25	
01753	240	21	85	2,5	142,20	
01754	300	24	100	3	224,00	
01755	400	27,5	100	3	261,70	
01756	500	31	140	3,5	473,00	
01757	630	34	160	3,5	617,50	

1. ELECTRICAL CONNECTION- AND INSTALLATION TECHNIQUE

1.4 Uninsulated tubular cable lugs and connectors for fine stranded cables

Highly flexible, fine stranded copper cables and conductors are needed to transfer the current inside of smaller and smaller designed switch gears or switch devices as well as inside of plants under cramped conditions (conductors similar to our highly flexible silicone insulated leadings acc. to the following catalogue page 40).

Such conductors consist out of single wires with a diameter of 0,07-0,10 mm and have therefore some thousands thin wires inside. So the outside diameters of the stripped cables are bigger compared with standard conductors. To realize crimping-operations with cable lugs which have the same cross-section than the leadings, druseidt offers a serie of cable lugs and connectors especially coordinated with the dimension of such fine stranded leadings. Additionally to the straight designed cable lugs druseidt offers angle-types as well as cable lugs with smaller flange too.

Combined with our highly flexible silicone insulated leadings we offer the possibility to work with small and flexible connections also under extremely cramped conditions. We recommend to crimp such cable lugs with our special WM-crimping compression dies. This crimping design enables an intensive compressing to the center of the conductor, especially when working with fine stranded cables.

Please notice that the crimping procedures will be done only with the right tools and the right compression dies suitable for druseidt tubular cable lugs and connectors for fine stranded cables.

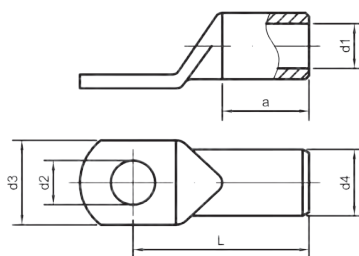
Crimping design:
WM-crimping



**Tubular cable lugs 10f-240f mm²
for fine stranded cables**

Material: Cu-HCP DIN EN 13600

Surface: tinned

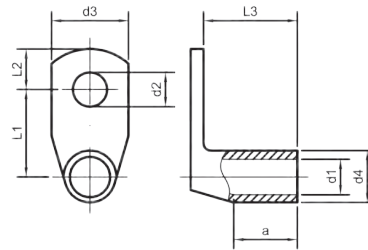


E 485326 up to 240f

Part-No.		cross-section mm ²	drilling M	dimensions mm				L	a	weight kg/‰ pcs.	crimping-tools/page no.
without inspection hole	with inspection hole			d ₁	d ₂	d ₃	d ₄				
13650	13650/S	10f	5	5	5,3	12	8	23	12	7,00	12930, 12933, page no. 171; 12728 page no. 188, 12869 page no. 162
13651	13651/S		6		6,4	12		25		7,60	
13652	13652/S		8		8,4	15		28		8,90	
13653	13653/S		10		10,5	18		31		9,70	
13654	13654/S		12		13	20		32		10,00	
10700	10700/S	16f	5	6	5,3	14	9	25,5	13	9,40	
13655	13655/S		6		6,4	14		27		10,10	
13656	13656/S		8		8,4	15		29,5		11,20	
13657	13657/S		10		10,5	18		32		11,20	
13658	13658/S		12		13	20		33		11,80	
13659	13659/S	25f	6	7,7	6,4	16	10,7	32	16	14,70	
13660	13660/S		8		8,4	16		34		14,30	
13661	13661/S		10		10,5	18		35		15,30	
13662	13662/S		12		13	20		36		16,10	
10702	10702/S	35f	6	9,2	6,4	18	12,4	36	18	20,70	
13663	13663/S		8		8,4	18		36		20,70	
13664	13664/S		10		10,5	18		38		21,40	
13665	13665/S		12		13	23		40		22,20	
13666	13666/S		16		17	28		45		22,10	
10704	10704/S	50f	6	11,2	6,4	22	14,8	42	21	32,00	
13667	13667/S		8		8,4	22		42		32,20	
13668	13668/S		10		10,5	22		43		33,10	
13669	13669/S		12		13	23		44		33,60	
13670	13670/S		16		17	28		48,5		36,50	
13671	13671/S	70f	8	13,5	8,4	25	17,5	45,5	23	48,00	
13672	13672/S		10		10,5	25		47		48,40	
13673	13673/S		12		13	26		47		48,40	
13674	13674/S		16		17	28		50		50,50	
10706	10706/S		20		21	31		54,5		55,20	
10707	10707/S	95f	8	15,5	8,4	29	20	50,5	26	65,60	
13675	13675/S		10		10,5	29		53		71,50	
13676	13676/S		12		13	29		52,5		69,80	
13677	13677/S		16		17	29		55		71,90	
13678	13678/S		20		21	35		60		76,10	
13679	13679/S	120f	10	16,8	10,5	31	21,3	56,5	29	80,70	
13680	13680/S		12		13	31		56		80,70	
13681	13681/S		16		17	31		58		83,60	
13682	13682/S		20		21	35		63		87,50	
10708	10708/S	150f	10	19	10,5	35	24	59	30	104,00	
13683	13683/S		12		13	35		58,5		107,00	
13684	13684/S		16		17	35		63		111,10	
13685	13685/S		20		21	35		66		119,60	
10710	10710/S	185f	10	21	10,5	38	26	67	29	135,90	
10711	10711/S		12		13	38		67		121,50	
10712	10712/S		16		17	38		69,5		129,80	
10713	10713/S		20		21	38		71		134,50	
10714	10714/S	240f	12	24	13	44	30	82	42	212,60	
10715	10715/S		16		17	44		82		219,40	
10716	10716/S		20		21	44		82		222,00	
10718	-	300f	12	27,5	13	49	33,5	92	47	279,00	
10719	-		16		17	49		92		279,00	
10720	-		20		21	49		92		281,90	

Tubular cable lugs 10f-240f mm²
Angle type 90° for fine stranded cables

Material: Cu-HCP DIN EN 13600
 Surface: tinned

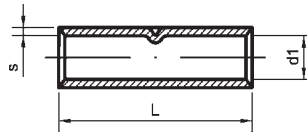


E 485326 up to 240f

Part-No.	cross-section mm ²	drilling M	dimensions mm								weight kg/% pcs.	crimping-tools/page no.																																	
			d ₁	d ₂	d ₃	d ₄	L ₁	L ₂	L ₃	a																																			
03410	10f	5	5	5,3	12	8	12	5,5	17	11	8,60	12930, 12933, page no. 171; 12728 page no. 188; 12869 page no. 162	12374 page no. 162																																
03412		6		6,4	13		14	7,5			8,70			30460 page no. 167; 12725 page no. 186	31460 page no. 169																														
03414		8		8,4	15		16	10			9,40					12766 page no. 172; 129655/ 12968 page no. 173; 14240/41 page no. 177; 12748 page no. 179; 13552 page no. 181; 13551/25; 13551/42; 13537 page no. 183;																													
03416		10		10,5	18		18	12			9,70							12836, 12485-87, 05256 page no. 199; 12837 page no. 200; 12724 page no. 190																											
03418		12		13	20		19	13			9,80																																		
03420	16f	5	6	5,3	15	9	12,5	5,5	17	12	9,40																																		
03422		6		6,4	15		14,5	7,5			10,50																																		
03424		8		8,4	15		16,5	10			11,80																																		
03426		10		10,5	18		18,5	12			12,50																																		
03428		12		13	20		19,5	13			14,30																																		
03430	25f	6	7,7	6,4	16	10,7	15,9	7,5	20,8	15	15,50																																		
03432		8		8,4	16		17,9	10			18,00																																		
03434		10		10,5	18		19,9	12			18,80																																		
03436		12		13	20		20,9	13			16,90																																		
03440	35f	6	9,2	6,4	18	12,4	16,7	7,5	21,5	17	19,70																																		
03442		8		8,4	18		18,7	10			22,00																																		
03444		10		10,5	18,5		20,7	12			23,40																																		
03446		12		13	23		21,7	13			22,30																																		
03448		16		17	28		24,7	16			22,50																																		
03450	50f	6	11,2	6,4	22	14,8	17,9	7,5	24,5	20	29,00																																		
03452		8		8,4	22		19,9	10			31,50																																		
03454		10		10,5	22		21,9	12			33,00																																		
03456		12		13	23		22,9	13			33,80																																		
03458		16		17	28		25,9	16			35,70																																		
03460	70f	8	13,5	8,4	25	17,5	21,3	10	28	22	45,30																																		
03462		10		10,5	25		23,3	12			48,20																																		
03464		12		13	25		24,3	13			50,63																																		
03466		16		17	28		27,3	16			51,00																																		
03468		20		21	31		31,3	19			54,00																																		
03470	95f	10	15,5	10,5	29	20	25	12	32	25	75,00																																		
03472		12		13	29		26	13			72,20																																		
03474		16		17	29		28,5	16			75,00																																		
03476		20		21	35		32,5	19			77,00																																		
03480	120f	10	16,8	10,5	31	21,3	25,7	12	34	28	78,60																																		
03482		12		13	31		26,7	13			80,20																																		
03484		16		17	31		29,7	16			83,30																																		
03486		20		21	35		33,7	19			86,10																																		
03490	150f	10	19	10,5	35	24	27	12	34,8	29	100,60																																		
03492		12		13	35		28	13			107,00																																		
03494		16		17	35		31	16			110,40																																		
03496		20		21	35		35	19			119,60																																		
03497	185f	12	21	13	38	26	29	13	43	34	126,90																																		
03498		16		17	38		32	16			134,60																																		
03499		20		21	38		36	19			140,20																																		
03500	240f	12	24	13	43	30	31	13	51	41	199,20																																		
03501		16		17	43		34	16			209,00																																		
03502		20		21	43		38	19			218,10																																		
03504	300f	12	27,5	13	49	33,5	34,8	14,5	58	46	313,00																																		
03505		16		17	49						313,00																																		
03506		20		21	49						313,00																																		

**Butt connectors 10f-240f mm²
for fine stranded cables**

Material: Cu-HCP DIN EN 13600
Surface: tinned

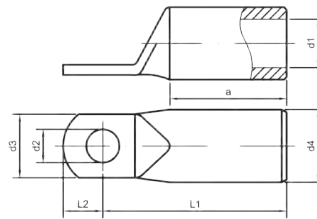


E 485326 up to 240f

Part-No.	cross-section mm ²	dimensions mm			weight kg/‰/pcs.	crimping-tools/page no.
		d ₁	L	s		
03800	10 f	5	30	1,5	8,30	crimping-tools pages no. 162-200
03801	16 f	6	35	1,5	11,00	
03802	25 f	7,7	40	1,5	15,00	
03803	35 f	9,2	45	1,6	21,80	
03804	50 f	11,2	50	1,8	32,40	
03805	70 f	13,5	60	2	51,00	
03806	95 f	15,5	65	2,25	74,90	
03807	120 f	16,8	65	2,25	84,40	
03808	150 f	19	70	2,5	105,60	
03809	185 f	21	85	2,5	140,10	
03810	240 f	24	100	3	227,30	

**Tubular cable lugs 35f-240f mm²
with narrow flange for fine stranded cables**

Material: Cu-HCP DIN EN 13600
Surface: tinned



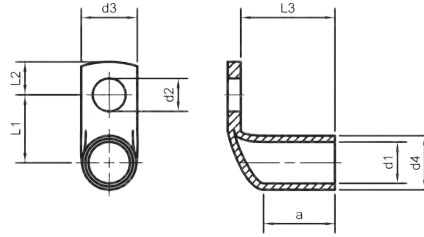
E 485326 up to 240f

Part-No.	cross-section mm ²	drilling M	dimensions mm							weight kg/‰/ pcs.	crimping-tools/page no.
			d ₁	d ₂	d ₃	d ₄	L ₁	L ₂	a		
10850	35f	6	9,2	6,4	15	12,4	35	7,5	18	17,70	12930, 12933 page no. 171; 12728 page no. 188; 12869 page no. 162; 12766 page no. 172; 12965S; 12968 page no. 173; 14240/41 page no. 177; 12748 page no. 179; 13552 page no. 181; 13551/25; 13551/42; 13557 page no. 183; 12836; 12485-87; 05256 page no. 199; 12837 page no. 200; 12724 page no. 190 31460 page no. 169 30460 page no. 167; 12725 page no. 186 12374 page no. 162
10852	50f	6	11,0	6,4	15	14,8	38,5	7,5	21	26,90	
10853		8		8,4	17		41	10		30,00	
10854		10		10,5	19		45,5	12		33,10	
10855		12		13	19		46,5	13		33,10	
10856	70f	6	13,4	6,4	18	17,5	47,5	7,5	23	45,10	
10857		8		8,4	18		48	10		47,00	
10858		10		10,5	19		50	12		47,40	
10859		12		13	22		51	13		46,30	
10861	95f	6	14,9	6,4	19	20	50	7,5	26	59,50	
10862		8		8,4	19		51	10		62,90	
10863		10		10,5	19		53,5	12		65,40	
10864		12		13	22		55	13		65,50	
10866	120f	6	16,3	6,4	19	21,3	53	7,5	29	68,40	
10867		8		8,4	19		55	10		71,10	
10868		10		10,5	19		57	12		73,40	
10869		12		13	22		58	13		76,30	
10871	150f	6	18,7	6,4	26	24	56	7,5	30	85,70	
10872		8		8,4	26		58	10		91,80	
10873		10		10,5	26		60	12		97,30	
10874		12		13	26		59,5	13		93,90	
10875		16		17	26		62,5	16		105,00	
10876	185f	10	21	10,5	30	26	65	12	35	117,20	
10877		12		13	30		65	13		112,70	
10878		16		17	30		68	16		117,60	
10880	240f	10	23,5	10,5	30	30	76	12	42	185,90	
10881		12		13	30		79	13		200,80	
10882		16		17	30		81	16		202,30	

The dimensions of the cable lugs are coordinated with the dimensions of our fine stranded ropes and silicone insulated leadings. In conjunction with such leadings it is possible to realize connetions also under cramped conditions. Cable lugs with narrow flange for normal stranded cables are described on page 44.

**Tubular cable lugs 35f-240f mm²
with narrow flange for fine stranded cables**

Angle type 90°
Material: Cu-HCP DIN EN 13600
Surface: tinned



E 485326 up to 240f

Part-No.	cross-section mm ²	drilling M	dimensions mm								weight kg/%/pcs.	crimping-tools/page no.
			d ₁	d ₂	d ₃	d ₄	L ₁	L ₂	L ₃	a		
03960	35f	6	9,2	6,4	15	12,4	16,7	7,5	21,5	17	18,00	crimping-tools pages no. 162-200
03961	50f	6	11	6,4	15	14,8	17,9	7,5	24,5	20	26,00	
03962		8		8,4	17		19,9	10			29,00	
03963		10		10,5	19		21,9	12			30,00	
03964	70f	6	13,4	6,4	18	17,5	20	7,5	31	22	43,00	
03965		8		8,4	18		22	10			45,00	
03966		10		10,5	19		24	12			48,00	
03967		12		13	22		27	13			48,00	
03968	95f	6	14,9	6,4	19	20	21	7,5	34	25	64,00	
03969		8		8,4	19		23	10			67,00	
03970		10		10,5	19		25	12			70,00	
03971		12		13	22		26	13			69,00	
03972	120f	6	16,3	6,4	19	21,3	21,7	7,5	37	28	73,00	
03973		8		8,4	19		23,7	10			77,00	
03974		10		10,5	19		25,7	12			79,00	
03975		12		13	22		26,7	13			78,00	
03976	150f	6	18,7	6,4	26	24	23	7,5	37,5	29	92,00	
03977		8		8,4	26		25	10			98,00	
03978		10		10,5	26		27	12			99,60	
03979		12		13	26		28	13			102,00	
03980		16		17	26		31	16			105,00	
03981	185f	10	21	10,5	30	26	28	12	43	34	119,00	
03982		12		13	30		29	13			119,00	
03983		16		17	30		32	16			123,00	
03984	240f	10	23,5	10,5	30	30	30	12	50	41	186,00	
03985		12		13	30		31	13			187,00	
03986		16		17	30		34	16			192,00	

The dimensions of the cable lugs are coordinated with the dimensions of our fine stranded ropes and silicone insulated leadings. In conjunction with such leadings it is possible to realize connetions also under cramped conditions.

**In comparison cable lugs with narrow flange with cable lugs
in standard- or Euro-type design**



The use of cable lugs with a narrow flange realize connections and an installation also into smaller places. In combination with our highly flexible silicone insulated leadings according to the following page 40 they offer excellent solutions for high current connections inside of small switch gears or similar application.

Silicone insulated copper cables 4-300 mm² 1,8/3 kV, single insulated

highly flexible, free of halogen, self-extinguishing, with UL-Style

- Highest flexibility for high current transfer
- Crimped with our cable lugs with smaller flange acc. to the catalogue pages 38 + 39 well suited for installation works in confined spaces
- With reinforced insulation, mechanically stable and stress resistant
- Free of halogen and self-extinguishing
- Temperature resistant - 50 °C up to + 180 °C shortly up to + 250 °C bis + 300 °C
- Testing voltage 10 kV (Sparktest)
- Dielectric strength 20 kV/mm
- Short circuit resistance SiR + 350° C
- Approvals and fire tests
UL-Style 3858
DIN EN 60332-1-2/VDE 0482-332-1-2
DIN EN 60332-3-24/VDE 0482-332-3-24
DIN EN 61034-2/VDE 0482-1034-2
DIN EN 50305/VDE 0260-305 section 9.2
- Delivery: Optionally in rings, on spools or wooden drums

	Part-No.	Technical data					Current load in dependence of the conductor heat in °C				
		Cross-section mm ²	Diameter and No. of wires	Outer-Ø ca.	Insulation thickness ca.		45 °C	80 °C	90 °C	100 °C	130 °C
1,5/1,5	15014	4,0	1036 x 0,07	4,8	1,1	30 A	50 A	55 A	60 A	70 A	
	15016	6,0	1568 x 0,07	5,6	1,1	40 A	65 A	70 A	78 A	90 A	
1,8/3 kV, single insulated	15020	10,0	2562 x 0,07	8,5	2,0	50 A	90 A	98 A	107 A	120 A	
	15022	16,0	4116 x 0,07	10,0	2,0	70 A	125 A	132 A	143 A	160 A	
	15024	25,0	3234 x 0,10	12,0	2,3	95 A	160 A	176 A	187 A	215 A	
	15026	35,0	4508 x 0,10	13,8	2,5	115 A	200 A	218 A	230 A	260 A	
	15028	50,0	6468 x 0,10	15,5	2,5	145 A	245 A	276 A	287 A	325 A	
	15030	70,0	8967 x 0,10	18,0	2,5	175 A	305 A	347 A	352 A	400 A	
	15032	95,0	12201 x 0,10	20,0	2,5	215 A	370 A	416 A	425 A	485 A	
	15034	120,0	15435 x 0,10	21,5	2,5	245 A	425 A	488 A	495 A	560 A	
	15036	150,0	19404 x 0,10	23,5	2,5	285 A	490 A	566 A	575 A	640 A	
	15038	185,0	23580 x 0,10	26,0	2,5	320 A	555 A	644 A	655 A	730 A	
	15040	240,0	30600 x 0,10	28,5	2,5	380 A	650 A	775 A	790 A	855 A	
	15042	300,0	38200 x 0,10	32,5	2,5	435 A	750 A	898 A	915 A	985 A	

Remark: All information about current load are approximate values in consideration of the cables heat for single laying of air cooled cables and ambient temperature + 30 °C. The values of a conductor heat of + 90 °C are in accordance with VDE 0298 part 4 table 15. By changing the ambient temperature or the kind of laying reducing factors are to be considered. Nature colour is standard but on request it is also possible to manufacture cables with colours like black, red, blue, yellow/green etc. or with reduced insulation thickness and other operating voltages. Minimum quantity on request. The outside diameter of our highly flexible copper conductors are manufactured in consideration with cable lugs acc. to DIN 46234/DIN 46341 and druseidt tubular cable lugs for fine stranded cables.



1. ELECTRICAL CONNECTION- AND INSTALLATION TECHNIQUE

1.5 Uninsulated tubular cable lugs and connectors, druseidt EURO-design

Caused by the fact that the German DIN-standardization for cable lugs and connectors cannot cover the whole range of electrical leadings and cables on the market, with their various kinds of conductor constructions and strandings, it is not possible to create an official standard for all designs.

Therefore different designs acc. to the specifications of the cable lug manufacturers have been established on the market. To activate as much as possible customers, druseidt offers, additionally to his approved cable lugs in standard design, a new so called Euro-design with changed tube dimension in the cross-section range of 6-120 mm². So it is possible to cover an additional section of cable lugs circulating in the market. Now customers, owning only tools for connectors acc. to the Euro-design, can buy the cable lugs by our company without making any changes in their tool assortment.

Cable lugs and connectors in Euro-design are deliverable in straight as well as different angled - or designs with narrow flange. We recommend to compress cable lugs in Euro-design with a WM-crimping. Suitable tools and compression die-sets especially for connectors acc. to the Euro-design, are described on the catalogue pages 159 ff.

Please notice, that the crimping procedures will be done only with the right tools in combination with the right compression dies suitable for cable lugs and connectors in Euro-design.

Crimping design:
WM-crimping

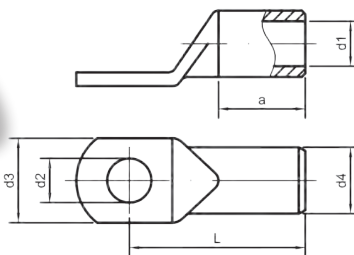


Tubular cable lugs 0,5-50 mm²

druseidt Euro-Series

Material: Cu-HCP DIN EN 13600

Surface: tinned



E 485326 from 6 mm²

Part-No.		cross-section mm ²	drilling M	dimensions mm						weight kg/‰ pcs.	crimping-tools/page no.	
without inspection hole	with inspection hole			d ₁	d ₂	d ₃	d ₄	L	a			
01580	-	0,5 - 0,75	3	1,4	3,2	6,5	3	12,5	6	0,71	30446 0,75-10 mm ² , 30446 1,5-16 mm ² page no. 160	
01581	-		4		4,3	8,5			14			0,80
01582	-		5		5,3	10			15			1,00
01583	-	1 - 1,5	3	1,9	3,2	6,5	3,9	14	6	1,20		
01584	-		4		4,3	8,5			15			1,40
01585	-		5		5,3	10			16			1,50
01586	-		6		6,4	11			18			1,70
01588	-		2,5	4	2,4	4,3	8,5	4,4	15	6,5		1,57
01589	-			5		5,3	10			16		
01590	-	6			6,4	11			18			1,92
01591	-	8			8,4	13			20			2,20
01592	-	4		4	3	4,3	8,5	5	17	8		2,20
01593	-			5		5,3	10			18		
01594	-		6		6,4	11			20			2,60
01595	-		8		8,4	14			22			3,00
03196	03196/S		6	4	3,5	4,3	10	6,5	19	9		4,60
03197	03197/S			5		5,3	10			20		
03198	03198/S	6			6,4	11			21,5			5,40
03199	03199/S	8			8,4	15			24			5,90
03200	03200/S	10			10,5	18			26			6,40
03201	03201/S	12			13	19			27,5			6,40
03202	03202/S	10	4	4,5	4,3	12	7	20	10	4,30		
03203	03203/S		5		5,3	12			21			4,90
03204	03204/S		6		6,4	12			22,5			5,10
03205	03205/S		8		8,4	15			25			5,80
03206	03206/S		10		10,5	18			27			6,30
03207	03207/S		12		13	20			28,5			6,30
03208	03208/S		16	4	5,5	4,3	12	8,5	24	13		8,20
03209	03209/S	5			5,3	12			25			8,80
03210	03210/S	6			6,4	12			26,5			9,60
03211	03211/S	8			8,4	15			29		10,30	
03212	03212/S	10			10,5	18			31		11,00	
03213	03213/S	12			13	19			32		10,80	
03214	03214/S	25	5	7	5,3	15	10	33,5	15	13,50		
03215	03215/S		6		6,4	15			31,5		13,10	
03216	03216/S		8		8,4	16			33		12,90	
03217	03217/S		10		10,5	18			34,5		14,60	
03218	03218/S		12		13	20			36		15,50	
03219	03219/S		14		15	22			39		16,60	
03220	03220/S		16		17	24			42		16,00	
03221	03221/S		35	6	8,5	6,4	17	12	33	17	20,70	
03222	03222/S			8		8,4	17			34		21,80
03223	03223/S			10		10,5	20			36,5		21,90
03224	03224/S	12			13	22			37,5		23,30	
03225	03225/S	14			15	23			40		24,40	
03226	03226/S	16			17	28			44		26,00	
03227	03227/S	50	6	10	6,4	20	14	37	19	30,10		
03228	03228/S		8		8,4	20			39		30,40	
03229	03229/S		10		10,5	20			40,5		31,30	
03230	03230/S		12		13	23			42		31,30	
03231	03231/S		14		15	23			44		35,10	
03232	03232/S		16		17	27			46		35,50	
03233	03233/S		20		21	30,5			52,5		38,90	

12372/50, 12372 page no. 161; 12655 page no. 165
 12373 page no. 161; 30460 page no. 167; 31460 page no. 169; 12930, 12933 page no. 171; 12766 page no. 172;
 12965/S, 12968 page no. 173; 14240/4 page no. 177; 12748 page no. 179; 13552 page no. 181;
 13551/2/5, 13551/4/2, 13537 page no. 183; 12725 page no. 186; 12728 page no. 188;
 12836, 12485-87, 05256 page no. 199;
 12837 page no. 200; 12869 page no. 162; 12724 page no. 190

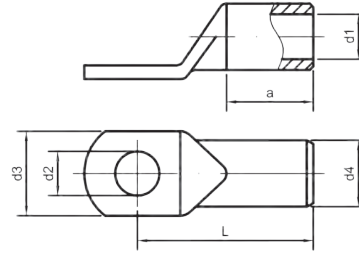
The dimensions of the Euro-series and the druseidt standard design according to catalogue page 30 are in the cross section range of 0,5-4 mm² identically constructed.

Tubular cable lugs 70-630 mm²

druseidt Euro-Series

Material: Cu-HCP DIN EN 13600

Surface: tinned



E 485326 up to 500 mm²

Part-No.		cross-section mm ²	drilling M	dimensions mm						weight kg/% pcs.	crimping-tools/page no.			
without inspection hole	with inspection hole			d1	d2	d3	d4	L	a					
03234	03234/S	70	6	12	6,4	24	16,5	40,5	21	41,10	05256 page no. 199	12373 page no. 161; 30460 page no. 167; 12725 page no. 186 12766 page no. 172; 12965/S; 12968 page no. 173; 14240/41 page no. 177; 12748 page no. 179; 13552 page no. 181; 13551/25; 13551/42; 13537 page no. 183; 12836; 12485-87 page no. 199; 12837 page no. 200; 12724 page no. 190		
03235	03235/S		8		8,4	24		42,5					44,60	
03236	03236/S		10		10,5	24		43,5					46,40	
03237	03237/S		12		13	24		45					46,40	
03238	03238/S		14		15	25		46					49,10	
03239	03239/S		16		17	28		48,5					49,60	
03240	03240/S		20		21	29		52					51,80	
03241	03241/S	95	6	13,5	6,4	26	18	43	23	49,50	05256 page no. 199	12373 page no. 161; 30460 page no. 167; 12725 page no. 186 31460 page no. 169; 12930; 12933 page no. 171; 12728 page no. 188; 12869 page no. 162		
03242	03242/S		8		8,4	26		46					53,60	
03243	03243/S		10		10,5	26		47					55,10	
03244	03244/S		12		13	26		48					53,50	
03245	03245/S		14		15	26		51,5					58,90	
03246	03246/S		16		17	28		51					59,70	
03247	03247/S		20		21	30		55					61,30	
03248	03248/S	120	8	15	8,4	29	20	49,5	26	68,80	05256 page no. 199	12373 page no. 161; 30460 page no. 167; 12725 page no. 186 31460 page no. 169; 12930; 12933 page no. 171; 12728 page no. 188; 12869 page no. 162		
03249	03249/S		10		10,5	29		52					74,20	
03250	03250/S		12		13	29		51,5					78,40	
03251	03251/S		14		15	30		53					79,90	
03252	03252/S		16		17	30		55					80,70	
03253	03253/S		20		21	35		60					89,00	
03254	03254/S		150	8	16,8	8,4	31	21,3	55,5	29			78,90	05256 page no. 199
01634	01714	10		10,5	31		56,5			81,90				
01635	01715	12		13	31		56			80,70				
10149	10174	14		15	31		57			80,00				
01636	01716	16		17	31		58			83,60				
01637	01717	20		21	35		63			87,50				
10145	10175	185	10	19	10,5	35	24	59	30	106,10	05256 page no. 199	12373 page no. 161; 30460 page no. 167; 12725 page no. 186 31460 page no. 169; 12930; 12933 page no. 171; 12728 page no. 188; 12869 page no. 162		
01638	01718	12		13	35		58,5			106,00				
10151	10176	14		15	35		61			107,20				
01639	01719	16		17	35		63			108,60				
01640	01720	20		21	35		66			113,30				
10152	10177	240	10	21	10,5	38	26	67	35	129,70			05256 page no. 199	12373 page no. 161; 30460 page no. 167; 12725 page no. 186 31460 page no. 169; 12930; 12933 page no. 171; 12728 page no. 188; 12869 page no. 162
01641	01721	12		13	38		67			130,20				
10153	10178	14		15	38		69			133,60				
01642	01722	16		17	38		69,5			138,40				
01643	01723	20		21	38		71			138,00				
01644	01724	300	12	24	13	44	30	82	42	217,20	05256 page no. 199	12373 page no. 161; 30460 page no. 167; 12725 page no. 186 31460 page no. 169; 12930; 12933 page no. 171; 12728 page no. 188; 12869 page no. 162		
10154	10190	14		15	44		84			221,90				
01645	01725	16		17	44		85			219,40				
01646	01726	20		21	44		85			229,20				
10155	-	400	10	27,5	10,5	49	33,5	92	47	279,00			05256 page no. 199	12373 page no. 161; 30460 page no. 167; 12725 page no. 186 31460 page no. 169; 12930; 12933 page no. 171; 12728 page no. 188; 12869 page no. 162
10150	-	12		13	49		92			279,00				
01647	-	16		17	49		92			279,00				
01648	-	20		21	49		92			281,90				
01649	-	500	16	31	17	55,5	38	113	70	493,80	05256 page no. 199	12373 page no. 161; 30460 page no. 167; 12725 page no. 186 31460 page no. 169; 12930; 12933 page no. 171; 12728 page no. 188; 12869 page no. 162		
01650	-	20		21	55,5		113			485,60				
01651	-	630	16	34	17	60	41	115	70	513,50	05256 page no. 199	12373 page no. 161; 30460 page no. 167; 12725 page no. 186 31460 page no. 169; 12930; 12933 page no. 171; 12728 page no. 188; 12869 page no. 162		
01652	-	20		21	60		115			506,00				

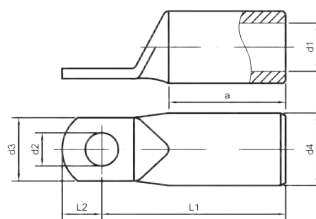
The dimensions of the Euro-Series and the druseidt standard design according to catalogue page 31 are in the cross section range of 150-630 mm² identically constructed.

Tubular cable lugs 35-300 mm² with narrow flange

druseidt Euro-Series

Material: Cu-HCP DIN EN 13600

Surface: tinned



E 485326

Part-No.	cross-section mm ²	drilling M	dimensions mm							weight kg/% pcs.	crimping-tools/page no.	
			d ₁	d ₂	d ₃	d ₄	L ₁	L ₂	a			
03900	35	6	8,5	6,4	15	12	33	7,5	17	18,00	12372/50 p.no. 161 12655 p.no. 165 12372 page no. 161 12373 page no. 161; 30460 page no. 167; 12725 page no. 186 31460 page no. 169; 12930; 12933 page no. 171; 12728 page no. 188; 12869 page no. 162 12766 page no. 172; 12965/S; 12968 page no. 173; 14240/41 page no. 177; 12748 page no. 179; 13552 page no. 181; 13551/25; 13551/42; 13537 page no. 183; 12836; 12485-87; 05256 page no. 199; 12837 page no. 200; 12724 page no. 190	
03901		8		8,4	15		35	10		21,60		
03902		50	6	10	6,4	15	14	37	7,5	19		27,30
03903			8		8,4	17		39	10			28,30
03904	10			10,5	17		41	12		29,90		
03905	70		6	11,8	6,4	17	16,5	41	7,5	21		40,60
03906		8		8,4	17		43	10		43,00		
03907		10		10,5	17		45	12		44,00		
03908		12		13	19		46	13		44,80		
03909	95	6	13,5	6,4	19	18	43	7,5	23	46,70		
03910		8		8,4	19		45	10		49,00		
03911		10		10,5	19		47	12		51,00		
03912		12		13	19		48	13		52,00		
03913	120	6	14,7	6,4	20	20	49	7,5	26	64,30		
03914		8		8,4	20		51	10		67,30		
03915		10		10,5	20		53	12		67,00		
03916		12		13	20		54	13		73,40		
03917	150	6	16,3	6,4	19	21,3	53	7,5	29	70,10		
03918		8		8,4	19		55	10		73,10		
03919		10		10,5	19		56	12		76,30		
03920		12		13	22		59	13		76,30		
03921	185	10	18,7	10,5	26	24	60	12	30	104,70		
03922		12		13	26		59,5	13		103,60		
03923		16		17	26		64	16		111,40		
03924	240	10	21	10,5	30	26	65	12	35	119,50		
03925		12		13	30		65	13		121,90		
03926		16		17	30		68	16		122,60		
03927	300	10	23,5	10,5	30	30	76	12	42	196,60		
03928		12		13	30		79	13		200,80		
03929		16		17	30		81	16		206,00		

Designs with inspection hole or 90° angled on request.

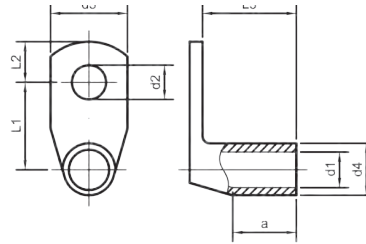
Tubular cable lugs 0,5-35 mm²

Angle type 90°

druseidt Euro-Series

Material: Cu-HCP DIN EN 13600

Surface: tinned



E 485326 from 6 mm²

Part-No.	cross-section mm ²	drilling M	dimensions mm									weight kg/% pcs.	crimping-tools/page no.
			d ₁	d ₂	d ₃	d ₄	L ₁	L ₂	L ₃	a			
10400	0,5-0,75	3	1,4	3,2	6,5	3	7,5	4	9,5	5	0,90	30445 0,75-10 mm ² , 30446 1,5-16 mm ² page no. 160 12372/50, 12372 page no. 161, 12655 page no. 165 12373 page no. 161, 30460 page no. 167, 31460 page no. 169; 12930, 12933 page no. 171, 12766 page no. 172, 12965/S, 12968 page no. 173, 14240/41 page no. 177, 12748 page no. 179; 13552 page no. 181, 13551/25, 13551/42, 12537 page no. 183; 12725 page no. 186, 12728 page no. 188; 12836, 12485-87, 05256 page no. 199, 12837 page no. 200; 12724 page no. 190, 12869 page no. 162	
10402		4		4,3	8,5		8,5	5			1,00		
10404		5		5,3	10		9,5	5,5			1,00		
10406	1-1,5	3	1,9	3,2	6,5	3,9	8	4	9,5	5	1,60		
10408		4		4,3	8,5		9	5			1,60		
10410		5		5,3	10		10	5,5			1,60		
10412		6		6,4	11		12	7,5			1,60		
10414	2,5	4	2,4	4,3	8,5	4,4	9,2	5	9,5	5,5	1,83		
10416		5		5,3	10		10,2	5,5			1,84		
10418		6		6,4	11		12,2	7,5			2,20		
10420		8		8,4	14		14,2	10			2,30		
10422	4	4	3	4,3	8,5	5	9,5	5	10,5	7	2,50		
10424		5		5,3	10		10,5	5,5			2,41		
10426		6		6,4	11		12,5	7,5			2,90		
10428		8		8,4	14		14,5	10			3,00		
03815	6	4	3,5	4,3	10	6,5	10,3	5	13,5	8	6,00		
03816		5		5,3	11		11,2	5,5			5,60		
03817		6		6,4	11		13,3	7,5			6,20		
03818		8		8,4	15		15,3	10			6,40		
03819		10		10,5	18		17,2	12			6,80		
03820		12		13	20		18,2	13			6,60		
03821	10	5	4,5	5,3	12	7	11,5	5,5	15	9	5,40		
03822		6		6,4	12		12,5	7,5			5,90		
03823		8		8,4	15		15,5	10			6,70		
03824		10		10,5	18		17,5	12			7,00		
03825		12		13	20		18,5	13			7,00		
03826	16	5	5,5	5,3	12	8,5	13	5,5	21	12	10,70		
03827		6		6,4	12		14,3	7,5			11,50		
03828		8		8,4	15		16,3	10			12,00		
03829		10		10,5	18		18,3	12			12,30		
03830		12		13	20		19,3	13			12,30		
03831	25	6	7	6,4	15	10	15,5	7,5	18	14	13,50		
03832		8		8,4	16		17,5	10			14,30		
03833		10		10,5	18		19,5	12			16,80		
03834		12		13	20		20,5	13			15,10		
03835		14		15	22		22,5	15			16,90		
03836	35	6	8,5	6,4	17	12	16,5	7,5	19,5	16	21,00		
03837		8		8,4	17		18,5	10			23,10		
03838		10		10,5	20		20,5	12			23,60		
03839		12		13	22		21,5	13			23,70		
03840		14		15	23		23,5	15			24,80		
03841		16		17	28		24,5	16			24,80		

The dimensions of the Euro-Series and the druseidt standard design according to catalogue page 32 are in the cross section range of 0,5-4 mm² identically constructed.

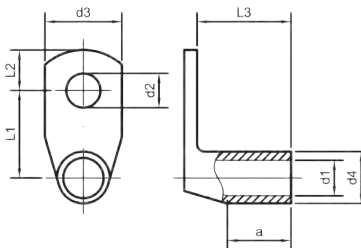
Tubular cable lugs 50-300 mm²

Angle type 90°

druseidt Euro-Series

Material: Cu-HCP DIN EN 13600

Surface: tinned



Part-No.	cross-section mm ²	drilling M	dimensions mm								weight kg/‰ pcs.	crimping-tools/page no.
			d ₁	d ₂	d ₃	d ₄	L ₁	L ₂	L ₃	a		
03842	50	6	10	6,4	20	14	17,5	7,5	21,5	18	30,00	12372/50 page no. 161; 12655 page no. 165 12372 page no. 161 12373 page no. 161; 30460 page no. 167; 12725 page no. 186 31460 page no. 169; 12930, 12933 page no. 171; 12766 page no. 172; 12965/S; 12968 page no. 173; 14240/41 page no. 177; 12748 page no. 179; 13552 page no. 181; 13551/25, 13551/42, 13537 page no. 183; 12728 page no. 188; 12836, 12485-87, 05256 page no. 199; 12837 page no. 200 12869 page no. 162
03843		8		8,4	20		19,5	10			32,20	
03844		10		10,5	20		21,5	12			33,20	
03845		12		13	23		22,5	13			32,80	
03846		14		15	23		24,5	15			33,70	
03847		16		17	27		28,5	16			36,30	
03848		20		21	30		32,5	19			38,90	
03849	70	6	12	6,4	24	16,5	18,8	7,5	26	20	44,10	
03850		8		8,4	24		20,8	10			49,20	
03851		10		10,5	24		22,8	12			50,60	
03852		12		13	24		23,8	13			48,70	
03853		14		15	25		25,8	15			48,40	
03854		16		17	28		26,8	16			51,10	
03855		20		21	29		30,8	19			52,60	
03856	95	8	13,5	8,4	26	18	21,5	10	26,4	22	53,30	
03857		10		10,5	26		23,5	12			55,90	
03858		12		13	26		24,5	13			55,30	
03859		14		15	26		26,5	15			58,90	
03860		16		17	28		27,5	16			60,00	
03861	120	8	15	8,4	29	20	22,5	10	32	25	76,30	
03862		10		10,5	29		24,5	12			80,70	
03863		12		13	29		25,5	13			80,10	
03864		16		17	30		28,5	16			84,60	
03865	150	8	16,8	8,4	31	21,3	25,7	10	34	28	80,30	
03866		10		10,5	31		25,7	12			80,70	
03867		12		13	31		26,7	13			82,90	
03868		16		17	31		29,7	16			85,00	
03869		20		21	35		33,7	19			88,90	
03870	185	10	19	10,5	35	24	27	12	42	29	114,10	
03871		12		13	35		28	13			120,40	
03872		16		17	35		31	16			124,80	
03873		20		21	35		35	19			127,00	
03874	240	10	21	10,5	38	26	28	12	44	34	133,20	
03875		12		13	38		29	13			132,80	
03876		16		17	38		32	16			137,80	
03877		20		21	38		36	19			141,50	
01838	300	12	24	13	43	30	31	13	51	41	199,20	
01840		16		17	43		34	16			209,00	
01842		20		21	43		38	19			218,10	

The dimensions of the Euro-Series and the druseidt standard design according to catalogue page 33 are in the cross section range of 300 mm² identically constructed.

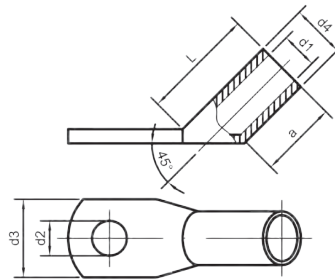
Tubular cable lugs 10-300 mm²

Angle type 45°

druseidt Euro-Series

Material: Cu-HCP DIN EN 13600

Surface: tinned



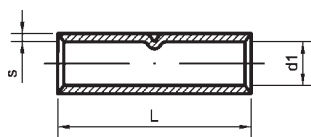
E 485326

Part-No.	cross-section mm ²	drilling M	dimensions mm						weight kg/% pcs.	crimping-tools/page no.	
			d ₁	d ₂	d ₃	d ₄	L	a			
03821/S-45	10	5	4,5	5,3	12	7	13,5	9	5,50	12766 page no. 172; 12965/S, 12968 page no. 173; 14240/41 page no. 177; 12748 page no. 179; 13552 page no. 181; 13551/25, 13551/42, 13537 page no. 189; 12836, 12465-87, 05256 page no. 199; 12837 page no. 200	
03822/S-45		6		6,4	12		13,5		5,80		
03823/S-45		8			8,4	15		13,8			6,50
03824/S-45		10			10,5	18		13,8			6,60
03826/S-45	16	5	5,5	5,3	12	8,5	17,5	12	9,50	31460 page no. 169; 12930, 12933 page no. 171; 12728 page no. 188; 12869 page no. 162	
03827/S-45		6		6,4	12		17,5		10,20		
03828/S-45		8			8,4	15		17,7			11,70
03829/S-45		10			10,5	18		18			11,70
03831/S-45	25	6	7	6,4	15	10	20,7	14	13,90	12373 page no. 161; 30460 page no. 167; 12725 page no. 186	
03832/S-45		8		8,4	16		20,9		15,10		
03833/S-45		10			10,5	18		21,1			16,60
03834/S-45		12			13	20		21,2			17,00
03836/S-45	35	6	8,5	6,4	17	12	24,2	16	21,70	12372/50 page no. 161; 12655 page no. 165	
03837/S-45		8		8,4	17		24,2		22,30		
03838/S-45		10			10,5	20		24,5			23,40
03839/S-45		12			13	22		24,7			24,00
03842/S-45	50	6	10	6,4	20	14	27,7	18	29,40	12372/50 page no. 161; 12655 page no. 165	
03843/S-45		8		8,4	20		27,7		33,40		
03844/S-45		10			10,5	20		27,7			36,50
03845/S-45		12			13	23		28,1			36,50
03850/S-45	70	8	12	8,4	24	16,5	31,9	20	49,00	12766 page no. 172; 12965/S, 12968 page no. 173; 14240/41 page no. 177; 12748 page no. 179; 13552 page no. 181; 13551/25, 13551/42, 13537 page no. 189; 12836, 12465-87, 05256 page no. 199; 12837 page no. 200	
03851/S-45		10		10,5	24		33		52,30		
03852/S-45		12			13	24		31,9			51,70
03856/S-45	95	8	13,5	8,4	26	18	35,5	22	63,20	12372/50 page no. 161; 12655 page no. 165	
03857/S-45		10		10,5	26		35		62,00		
03858/S-45		12			13	26		35,5			62,00
03859/S-45		16			17	28		35,5			68,00
03861/S-45		120	8	15	8,4	29	20	40,1	25		78,00
03862/S-45	10			10,5	29		40,1		89,00		
03863/S-45	12				13	29		40,1		89,10	
03864/S-45	16				17	30		40,2		93,10	
03865/S-45	150	8	16,8	8,4	31	21,3	47,5	28	102,00	12372/50 page no. 161; 12655 page no. 165	
03866/S-45		10		10,5	31		47,5		98,00		
03867/S-45		12			13	31		47,5			96,80
03868/S-45		16			17	31		47,5			101,20
03869/S-45		20			21	35		48,2			101,20
01831/S-45	185	12	19	13	35	24	51	29	122,90	12372/50 page no. 161; 12655 page no. 165	
01832/S-45		16		17	35		51		119,60		
01833/S-45		20			21	35		51			139,90
01834/S-45	240	12	21	13	38	26	61	34	154,60	12372/50 page no. 161; 12655 page no. 165	
01835/S-45		16		17	38		61		165,10		
01836/S-45		20			21	38		61			170,40
03880/S-45	300	16	24	17	43	30	69	41	256,80	12372/50 page no. 161; 12655 page no. 165	
03881/S-45		20		21	43						273,00

The dimensions of the Euro-Series and the druseidt standard design according to catalogue page 33 are in the cross section range of 185 and 240 mm² identically constructed.

Butt connectors
druseidt Euro-Series

Material: Cu-HCP or ETP DIN EN 13600
Surface: tinned



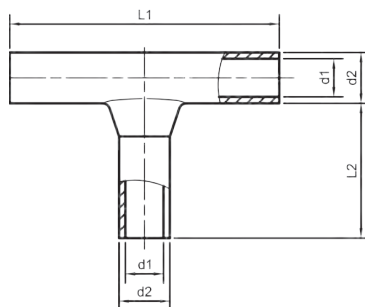
E 485326 from 6 up to 400 mm²

Part-No.	cross-section mm ²	dimensions mm			weight kg/‰ pcs.	crimping-tools/page no.
		d ₁	L	s		
13686	0,5-0,75	1,4	15	0,8	0,80	pages no. 160-162 165-200
13687	1-1,5	1,9	15	1	1,20	
13688	2,5	2,4	16	1	1,50	
13689	4	3	19	1	2,10	
03165	6	3,5	25	1,5	5,10	
03166	10	4,5	30	1,25	6,00	
03167	16	5,5	35	1,5	10,00	
03168	25	7	40	1,5	14,10	
03169	35	8,5	45	1,75	21,60	
03170	50	10	50	2	33,20	
03171	70	12	55	2,25	49,10	
03172	95	13,5	60	2,25	60,90	
03173	120	15	65	2,5	78,80	
13699	150	16,8	70	2,25	86,50	
01752	185	19	75	2,5	116,25	
01753	240	21	85	2,5	142,20	
01754	300	24	100	3	224,00	
01755	400	27,5	100	3	261,70	
01756	500	31	140	3,5	473,00	
01757	630	34	160	3,5	617,50	

The dimensions of the Euro-Series and the druseidt standard design according to catalogue page 34 are in the cross section range of 0,5 -4 mm² and 150-630 mm² identically constructed.

Tubular T-connectors 1-300 mm²
druseidt Euro-Series

Material: Cu-HCP or ETP DIN EN 13600
Surface: tinned



E 485326 from 6 mm²

Part-No.	cross-section mm ²	dimensions mm				weight kg/‰ pcs.	crimping-tools/page no.
		d ₁	d ₂	L ₁	L ₂		
03941	1-1,5	1,9	3,9	30	6	3,60	30445 up to 10 mm ² page no. 160 30446 up to 16 mm ² 12373/50 page no. 161; 12655 page no. 165 12372 page no. 161 12373 p.no. 161; 30460 p.no. 169; 12725 p.no. 186 12930, 12933 page no. 171; 12728 page no. 188 14240/42 page no. 177; 12748 page no. 179
03942	2,5	2,4	4,4	30	16	4,50	
03943	4	3	5	35	16,5	5,70	
03944	6	3,5	6,5	35	17	10,80	
03945	10	4,5	7	45	25	14,00	
03946	16	5,5	8,5	50	26	23,00	
03947	25	7	10	50	27	24,00	
03948	35	8,5	12	60	31	45,00	
03949	50	10	14	72	35	72,00	
03950	70	12	16,5	77	37	103,50	
03951	95	13,5	18	88	45	127,00	
03952	120	15	20	106	53	178,00	
03953	150	16,8	21,3	120	58	234,20	
03954	185	19	24	110	42	256,20	
03955	240	21	26	135	55	339,40	
03956	300	24	30	140	55	477,00	