

# 1. ELECTRICAL CONNECTION- AND INSTALLATION TECHNIQUE

## 1.1 Insulated cable lugs and connectors

The druseidt company delivers various kinds of insulated cable lugs and connectors acc. to DIN 46237, 46231, 46245 part 1-3 as well as usual in trade designs up to a cross-section range of 150 mm<sup>2</sup>. The used insulating materials are PA heat resistant up to + 105° C, PC heat resistant up to + 100° C, PVC heat resistant up to + 70° C.

All cable lugs are manufactured out of copper with a high conductivity and will be hard soldered in the range of the connecting sleeve. The inner parts of the connecting sleeves are chamfered and raise the cohesion of the crimping. The easy entry insulation sleeves are free of halogen and enable an easy insertion of conductors. To protect cable connections against moisture, shrinkable designs with adhesive are offered too. The recommend crimping design is a so called oval crimping acc. to the adjoining examples.

Please notice, that the crimping operations will be done only with the right and suitable tools and die-sets.

Recommend crimping:  
Oval-crimping



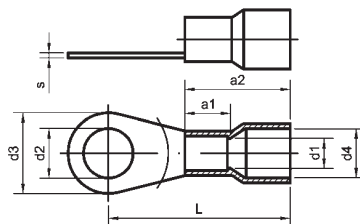
**Insulated cable lugs 0,5-6 mm<sup>2</sup>**

Ringtype in acc. with DIN 46237

with flared insulation sleeve

Material: Cu-HTP, tinned and soldered

Insulation sleeve: PA, free of halogen



Part-No.	cross-section mm <sup>2</sup>	drilling M	dimensions mm								weight kg/ % pcs.	crimping-tools/page no.			
			d <sub>1</sub>	d <sub>2</sub>	d <sub>3</sub>	d <sub>4</sub>	L	a <sub>1</sub>	a <sub>2</sub>	s					
01006.01.02	0,5-1	2,5	1,6	2,7	6	4,1	16,5	5,5	11	0,80	0,60	12430, 12408 page no. 158; 12425 page no. 159, 12230 page no. 156	12858, 05160/61/62 page no. 153	12600/N, 12601, 05180 page no. 152	
01007.01.02		3		3,2	6		17								0,60
01008.01.02		3,5		3,7	6		17								0,55
01010.01.02		4		4,3	8		18								0,70
01012.01.02		5		5,3	10		19								0,90
01013.01.02		6		6,4	11		21								0,80
01015.01.02	8		8,4	11,6		21,6				1,30					
01016.01.02	1,5-2,5	3	2,3	3,2	6	4,5	17	5,5	11	0,80	0,65				
01017.01.02		3,5		3,7	6		17							0,65	
01020.01.02		4		4,3	8		18							0,80	
01022.01.02		5		5,3	10		20							0,90	
01024.01.02		6		6,4	11		22							1,10	
01025.01.02		8		8,4	14		23							1,30	
01026.01.02	10		10,5	14		25				1,60					
01028.01.02	4-6	4	3,6	4,3	8	6,5	21	6,0	13	1,00	1,40				
01029.01.02		5		5,3	10		22							1,60	
01030.01.02		6		6,4	11		23							1,70	
01031.01.02		8		8,4	14		26							2,20	
01032.01.02		10		10,5	18		28							2,90	

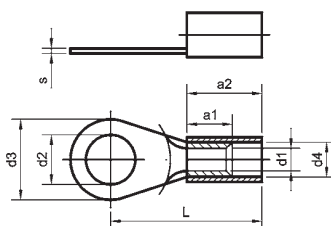
**Insulated cable lugs, 0,1-6 mm<sup>2</sup>**

Ringtype, in special design

not in acc. with DIN Material: Cu-HTP,

tinned and soldered

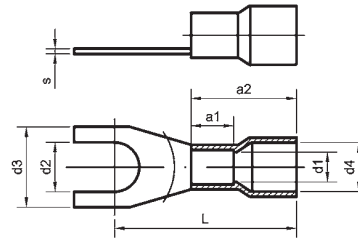
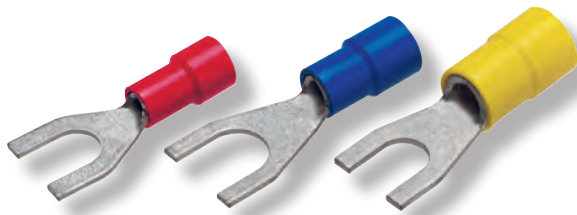
Insulation sleeve: PVC or PA



Part-No.	cross-section mm <sup>2</sup>	drilling M	dimensions mm								weight kg / % pcs.	crimping-tools/page no.		
			PVC	PA	d <sub>1</sub>	d <sub>2</sub>	d <sub>3</sub>	d <sub>4</sub>	L	a <sub>1</sub>			a <sub>2</sub>	s
-	01000.01	0,1-0,5	2		1	2,2	5	2	14	4	8	0,5	0,23	05103 page no. 152 05160/05162 page no. 153
-	01001.01		3			3,2	5		14			0,20		
-	01002.01		4			4,3	7		16			0,26		
-	01003.01		5			5,3	8		15			0,28		
01005	01005.01	0,5-1	2		1,6	2,2	6	3,2	16	5	10	0,8	0,55	12600/N, 12601, 05180 page no. 152
01009	01009.01		4			4,3	7		16			0,70		
01011	01011.01		5			5,3	8		17			0,90		
01014	01014.01		6			6,5	12		22			1,30		
01018	01018.01	1,5-2,5	3,5		2,3	3,7	6,8	4,3	17	5	11	0,8	0,65	12858, 05160/61/62 page no. 153
01019	01019.01		4			4,3	6,8		17			0,80		
01021	01021.01		5			5,3	8		18			0,90		
01023	01023.01		6			6,5	10		20			1,10		
01027	01027.01		12			13,0	18		26			1,50		
01033	01033.01		4-6	12		3,6	13,0	18	6,4	27	6	12		

### Insulated cable lugs 0,1-16 mm<sup>2</sup>

Forktype with flared insulation sleeve  
 Material: Cu-HCP, tinned and soldered  
 Insulation sleeve: PA, free of halogen

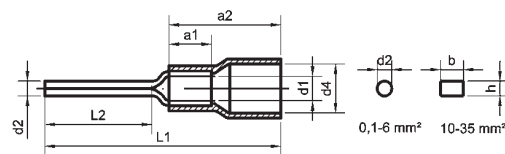


Part-No.	cross-section mm <sup>2</sup>	drilling M	dimensions mm								weight kg/% pcs.	crimping-tools/page no.
			d <sub>1</sub>	d <sub>2</sub>	d <sub>3</sub>	d <sub>4</sub>	L	a <sub>1</sub>	a <sub>2</sub>	s		
01040.01*	0,1-0,5	3	1	3,2	5	2	14	4	8	0,5	0,20	05103, 05160
01041.01.02	0,5-1	3	1,6	3,2	6	4,1	17	5	10,5	0,8	0,60	12425 page no 159, 12230 page no 156
01042.01.02		3,5	3,7	6,4	17	0,60						
01044.01.02		4	4,3	6,4	17	0,70						
01045.01.02		5	5,3	10	19	0,90						
01046.01.02		6	6,4	11	21	0,80						
01048.01.02		1,5-2,5	3	2,3	3,2	6	4,5	17	5	11,5	0,8	
01050.01.02	3,5		3,7	6	17	0,65						
01051.01.02	4		4,3	6,4	17,3	0,80						
01053.01.02	5		5,3	10	20	0,90						
01054.01.02	6		6,4	11	22	1,10						
01055.01.02	4-6		4	3,6	4,3	8	6,5	21	6	12,5	1	1,40
01056.01.02		5	5,3	10	22	1,60						
01057.01.02		6	6,4	11	23	1,70						
01058.01.02		8	8,4	14	26	2,20						
01059.01.02		10	10,5	18	28	2,80						
10021.01.02		10	5	4,5	5,3	10,5	8	23,8	8	16	1	2,30
01060.01.02	6		6,5	11	24,4	2,40						
01062.01.02	16	6	5,8	6,5	11	10,9	32,1	10	20	1	3,80	12655 page no. 165
01063.01.02		8	8,4	14	34,1	5,00						

\* Design without flared insulation sleeve

### Insulated Pin connectors 0,1-35 mm<sup>2</sup>

DIN 46231 and special design  
 with and without flared insulation sleeve  
 Material: Cu-HCP, tinned and soldered  
 Insulation sleeve: PVC or PA free of halogen

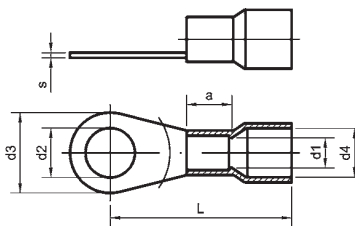


Part-No.	cross-section mm <sup>2</sup>	DIN-type	dimensions mm										weight kg/% Stck	crimping-tools/page no.
			PVC	PA	d <sub>1</sub>	d <sub>2</sub>	b	h	d <sub>4</sub>	a <sub>1</sub>	a <sub>2</sub>	L <sub>1</sub>		
- 01070.01	0,1 - 0,5	-	-	1	1,4	-	-	2	4	8	18	8	0,30	05103, 05160
- 01071.01.02*	0,5-1	1	1,6	1,9	-	-	4,1	5	11	22,5	10	0,70	12600/N, 12601, 05180 page no. 152	
01072.01.02		-	-	-	-	3,2	10,5	20	8	0,65				
01073.01.02		-	-	-	-	3,2	17	5	0,60					
- 01074.01.02*	1,5-2,5	2,5	2,3	1,9	-	-	4,5	5,5	11	23,5	10	0,75	12425 page no. 159, 12230 page no. 156	
01076.01.02		-	-	-	-	5,1	5	11,5	28	15	0,90			
- 01077.01.02*	4-6	6	3,6	2,7	-	-	6,5	6	12,5	26,5	11	1,70	12430, 12408 page no. 158	
- 01078.01.02*	10	-	4,5	-	4,3	2,4	7,7	8	20	34	12	2,55	12425 page no. 159, 12230 page no. 156	
- 01079.01.02*	16	-	5,8	-	5,6	2,5	9	10	24,2	40,7	13,5	4,30		
- 01092.01.02*	25	-	7	-	6,9	2,5	12,4	13,5	24,8	44	16	6,85	12602 page no. 152	
- 01094.01.02*	35	-	8,4	-	8,1	3,2	14	16	27,8	52,5	20	12,20		

\* Design with flared insulation sleeve

### Insulated cable lugs 10-150 mm<sup>2</sup>

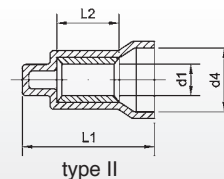
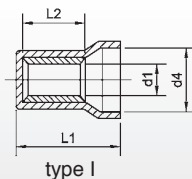
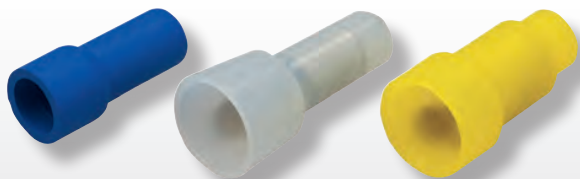
Ringtype, with flared insulation sleeve  
 Material: Cu-ETP, tinned and soldered  
 Insulation sleeve: PA, free of halogen



Part-No.	cross-section mm <sup>2</sup>	drilling M	dimensions mm								weight kg/% pcs.	crimping-tools/page no.				
			d <sub>1</sub>	d <sub>2</sub>	d <sub>3</sub>	d <sub>4</sub>	L	a	s	12230 page no. 156		12602 page no. 152	12655 page no. 165	30460 page no. 167; 12930/33 page no. 171	31460 page no. 169	
01461.01.02	10	5	4,5	5,3	10	8	24,5	8	1,1	2,30						
01462.01.02		6		6,5	11		25,5			2,45						
01463.01.02		8		8,4	14		28,5			2,95						
01464.01.02		10		10,5	18		29,5			3,50						
01466.01.02	16	5	5,8	5,3	11	10,5	31,5	10	1,2	4,00						
01467.01.02		6		6,5	11		31,5			3,80						
01468.01.02		8		8,4	14		33,5			4,25						
01469.01.02		10		10,5	18		35,5			5,00						
01471.01.02	25	5	7,5	5,3	12	13	38	11	1,5	7,00						
01472.01.02		6		6,5	12		38			7,00						
01473.01.02		8		8,4	16		38			7,60						
01474.01.02		10		10,5	18		39			7,80						
01475.01.02		12		13	22		44			9,70						
01476.01.02	35	6	9	6,5	15	14,5	41	12	1,6	9,70						
01477.01.02		8		8,4	16		41			9,70						
01478.01.02		10		10,5	18		42			10,00						
01479.01.02		12		13	22		46			11,70						
01494.01.02	50	6	11	6,5	18	16,5	47,5	16	1,8	17,55						
01480.01.02		8		8,4	18		47,5			17,10						
01481.01.02		10		10,5	18		47,5			16,50						
01482.01.02		12		13	22		49,5			18,00						
01483.01.02	70	6	13	6,5	22	18,7	51	18	2	26,30						
01484.01.02		8		8,4	22		51			26,30						
01485.01.02		10		10,5	22		51			25,50						
01486.01.02		12		13	22		51			24,70						
01487.01.02		16		17	28		55			27,70						
01495.01.02	95	8	15	8,4	24	21,7	57,5	20	2,5	41,10						
01488.01.02		10		10,5	24		57,5			41,70						
01489.01.02		12		13	24		57,5			39,40						
01490.01.02		16		17	28		59,5			39,40						
01496.01.02	120	8	16,5	8,4	24	24,2	62	22	3	57,70						
01491.01.02		10		10,5	24		62			56,70						
01492.01.02		12		13	24		62			53,30						
01493.01.02		16		17	28		66			64,10						
01497.01.02	150	10	19	10,5	30	27,2	70	24	3,2	82,90						
01498.01.02		12		13	30		70			78,30						
01499.01.02		16		17	30		70			80,10						

### Insulated closed end terminals 1,5-6 mm<sup>2</sup>

Material: Cu-ETP, tinned  
 Insulation sleeve: PA, free of halogen



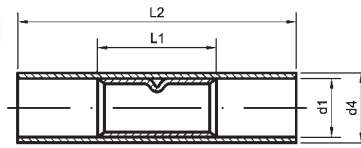
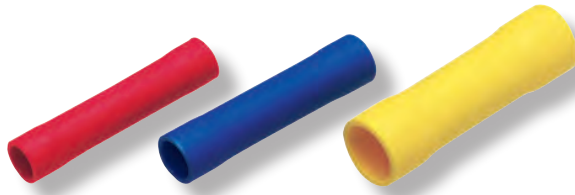
Best-Nr.	cross-section mm <sup>2</sup>	type	dimensions mm				weight kg/% pcs.	crimping-tools/page no.
			d <sub>1</sub>	d <sub>4</sub>	L <sub>1</sub>	L <sub>2</sub>		
01088.01	1,5-2,5	I	3,0	8,0	21	7	0,60	12600/N, 12601, 05180 page no. 152
01090.01	1,5-2,5		2,3	5,2	16	7	0,50	12858/05160/61/62 page no. 153
01091.01	4-6		3,6	9,0	18	7	1,42	12430, 12408, 12425 page no. 158/59
01089.01	4-6	II	3,8	9,5	27	7	0,90	12230 page no. 156



**Insulated butt connectors 0,1-6 mm<sup>2</sup>**

Material: Cu-ETP tinned

Insulation sleeve: PVC or PA, free of halogen



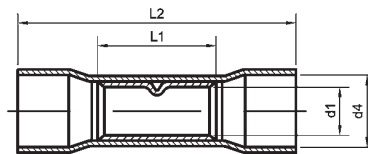
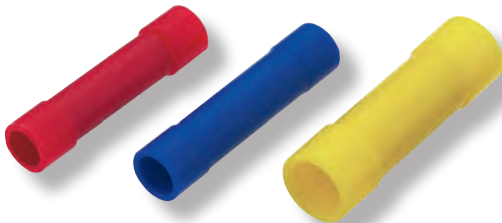
PVC	Part-No.		cross-section mm <sup>2</sup>	dimensions mm				weight kg/% pcs.	crimping-tools/page no.
		PA		d <sub>1</sub>	d <sub>4</sub>	L <sub>1</sub>	L <sub>2</sub>		
-		<b>10022.01</b>	0,1-0,5	1,2	2	12	20	0,30	05103, 05160 S. 152/153
<b>01080</b>		<b>01080.01</b>	0,5-1,0	1,6	3,2	15	25	0,90	12600/N, 12601, 05180 page no. 152
<b>01081</b>		<b>01081.01</b>	1,5-2,5	2,3	4	15	25	1,15	12858/05160/61/62 page no. 153
<b>01082</b>		<b>01082.01</b>	4-6	3,6	5,8	15	27	2,50	12430, 12408, 12425 page no. 158/59

**Insulated butt connectors 0,5-6 mm<sup>2</sup>**

with flared insulation sleeve

Material: Cu-ETP tinned

Insulation sleeve: PC, free of halogen

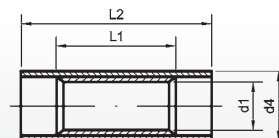
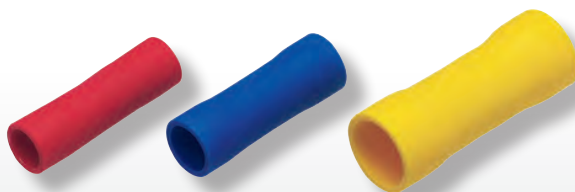


Part-No.	cross-section mm <sup>2</sup>	d <sub>1</sub>	d <sub>4</sub>	L <sub>1</sub>	L <sub>2</sub>	weight kg/% pcs.	crimping-tools/page no.
<b>01080.02</b>	0,5-1,0	1,6	4,1	15	25	1,10	12600/N, 12601, 05180 page no. 152
<b>01081.02</b>	1,5-2,5	2,3	4,5	15	26	1,20	12858/05160/61/62 page no. 153
<b>01082.02</b>	4-6	3,6	6,4	15	27	2,60	12430, 12408, 12425 page no. 158/59

**Insulated parallel-connectors 0,1-6 mm<sup>2</sup>**

Material: Cu-ETP, tinned

Insulation sleeve: PVC or PA, free of halogen



PVC	Part-No.		cross-section mm <sup>2</sup>	dimensions mm				weight kg/% pcs.	crimping-tools/page no.
		PA		d <sub>1</sub>	d <sub>4</sub>	L <sub>1</sub>	L <sub>2</sub>		
-		<b>10024.01</b>	0,1-0,5	1,2	2,0	5	13	0,15	05103, 05160 S. 152/153
<b>01083</b>		<b>01083.01</b>	0,5-1,0	1,6	3,2	7	17	0,40	12600/N, 12601, 05180 page no. 152
<b>01084</b>		<b>01084.01</b>	1,5-2,5	2,3	4,6	7	17	0,50	12858/05160/61/62 page no. 153
<b>01085</b>		<b>01085.01</b>	4-6	3,6	6,4	7	21	0,90	12430, 12408, 12425 page no. 158/59

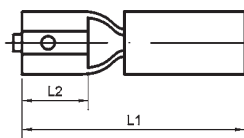
**Insulated receptacles 0,5-6 mm<sup>2</sup>**

in acc. with DIN 46245 part 1-3 and special design

with add. metallic insulation enclosure

Material: brass, tinned

Insulation sleeve: PVC



Part-No.	cross-section mm <sup>2</sup>	tab-width mm	tab-thickness mm	DIN-size	dimensions mm		weight kg/‰ pcs.	crimping-tools/page no.
					L <sub>1</sub>	L <sub>2</sub>		
01100	0,5-1,0	2,8	0,5	A 2,8 - 1	17,5	8	0,33	12600/N, 12601, 05180 page no. 152 12858, 05160/61/62 page no. 153 12430, 12408 page no. 158 12425 page no. 159 12230 page no. 156
01101			0,8	B 2,8 - 1			0,33	
01102	0,5-1,0	4,8	0,5	-	18	6	0,50	
01103	1,5-2,5			-			0,48	
01104	0,5-1,0	4,8	0,8	4,8 - 1			0,50	
01105	1,5-2,5			4,8 - 2,5			0,48	
01106	0,5-1,0	6,3	0,8	6,3 - 1	22	7,4	0,82	
01107	1,5-2,5			6,3 - 2,5			0,92	
01108	4-6			6,3 - 6			0,98	
01109	0,5-1,0	7,7	0,8	-	25	9,5	1,07	
01110	1,5-2,5			-			1,16	
01111	4-6	9,5	1,2	-	27	12	1,50	

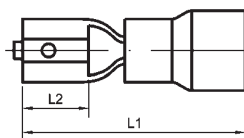
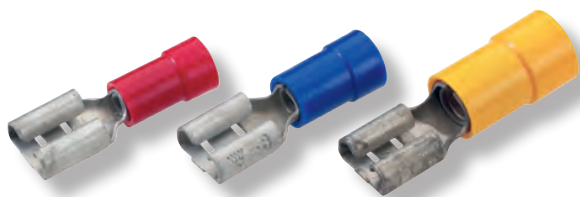
**Insulated receptacles 0,5-6 mm<sup>2</sup>**

in acc. with DIN 46245 part 1-3

with flared insulation sleeve without metallic insulation enclosure

Material: brass, tinned

Insulation sleeve: PC, free of halogen



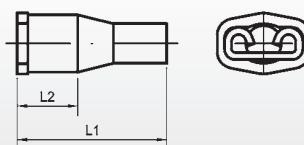
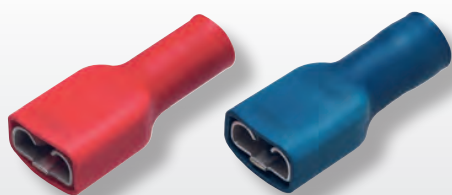
Part-No.	cross-section mm <sup>2</sup>	tab-width mm	DIN-size	tab-thickness mm	dimensions mm		weight kg/‰ pcs.	crimping-tools/page no.
					L <sub>1</sub>	L <sub>2</sub>		
30024	0,5-1,0	2,8	A 2,8 - 1	0,5	18,6	8	0,60	12600/N, 12601, 05180 page no. 152 12858, 05160/61/62 page no. 153 12430, 12408 page no. 158 12425 page no. 159 12230 page no. 156
30025			B 2,8 - 1	0,8			0,60	
30026	0,5-1,0	6,3	6,3 - 1	0,8	20	7,4	0,96	
30028	1,5-2,5		6,3 - 2,5				1,06	
30029	4-6		6,3 - 6		24		1,83	

**Fully insulated receptacles 0,5-2,5 mm<sup>2</sup>**

with add. metallic insulation enclosure

Material: brass, tinned

Insulation sleeve: PVC



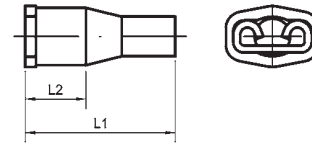
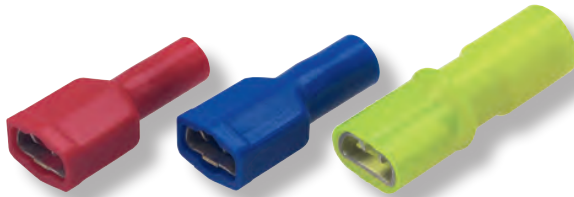
Part-No.	cross-section mm <sup>2</sup>	tab-width mm	tab-thickness mm	dimensions mm		weight kg/‰ pcs.	crimping-tools/page no.
				L <sub>1</sub>	L <sub>2</sub>		
30001	0,5-1,0	6,3	0,8	21	7,4	0,82	pages no. 152, 153, 156-159
30002	1,5-2,5					0,91	

**Fully insulated receptacles 0,5-6 mm<sup>2</sup>**

without metallic insulation enclosure

Material: brass, tinned

Insulation sleeve: PA or PC, free of halogen



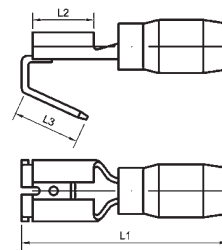
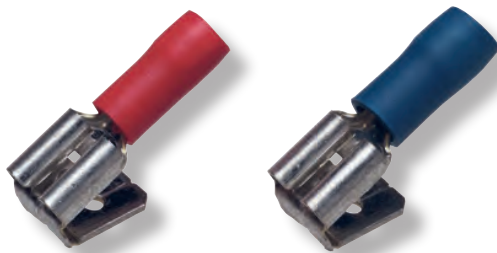
Part-No.	cross-section mm <sup>2</sup>	tab-width mm	tab-thickness mm	dimensions mm		weight kg/‰ pcs.	crimping-tools/page no.
				L <sub>1</sub>	L <sub>2</sub>		
30003	0,5 - 1,0	2,8	0,5	19,3	8	1,10	12600/N, 12601, 05180 page no. 152 12858, 05160/61/62 page no. 153 12430, 12408 page no. 158 12425 page no. 159
30010			0,8			1,10	
30011	0,5 - 1,0	4,8	0,5	20,2	6	1,15	
30013	1,5 - 2,5					1,20	
30012	0,5 - 1,0		0,8			1,15	
30014	1,5 - 2,5					1,20	
30018	0,5 - 1,0	6,3	0,8	21	7,4	1,23	
30020	1,5 - 2,5					1,32	
30022	4 - 6			26		2,15	

**Insulated multiple tabs 0,5-2,5 mm<sup>2</sup>**

with add. metallic insulation enclosure

Material: brass, tinned

Insulation sleeve: PVC



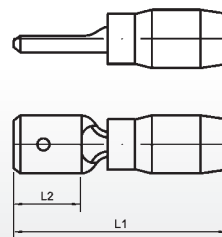
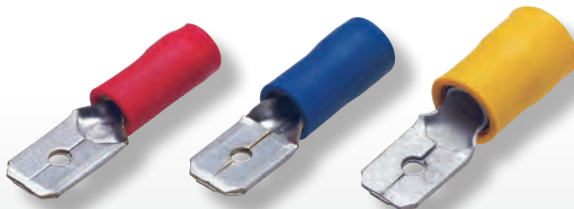
Part-No.	cross-section mm <sup>2</sup>	tab-width mm	tab-thickness mm	dimensions mm			weight kg/‰ pcs.	crimping-tools/page no.
				L <sub>1</sub>	L <sub>2</sub>	L <sub>3</sub>		
01117	0,5 - 1,0	6,3	0,8	22	7,5	8	1,12	pages no. 152, 153, 156-159
01118	1,5 - 2,5						1,12	

**Insulated tabs 0,5-6 mm<sup>2</sup>**

with add. metallic insulation enclosure

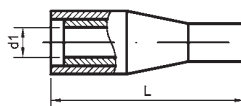
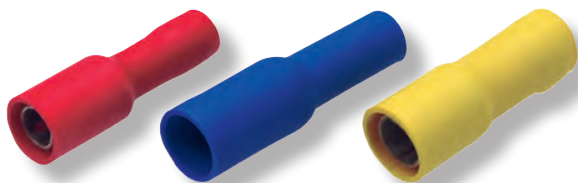
Material: brass, tinned

Insulation sleeve: PVC



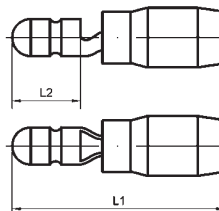
Part-No.	cross-section mm <sup>2</sup>	tab-width mm	tab-thickness mm	dimensions mm		weight kg/‰ pcs.	crimping-tools/page no.
				L <sub>1</sub>	L <sub>2</sub>		
01120	0,5 - 1,0	2,8	0,8	14,6	5,5	0,24	pages no. 152, 153, 156-159
01122	0,5 - 1,0	6,3	0,8	22	8	0,58	
01123	1,5 - 2,5					0,66	
01124	4 - 6					0,77	

**Insulated female bullets 0,5-6 mm<sup>2</sup>**

 Material: bronze, tinned  
 Insulation sleeve: PVC


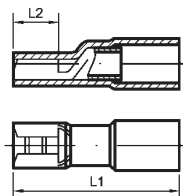
Part-No.	cross-section mm <sup>2</sup>	dimensions mm		weight kg/‰ pcs.	crimping-tools/page no.
		d <sub>1</sub>	L		
01130	0,5 - 1,0	4	22	0,56	12600/N, 12601, 05180 page no. 152 12858/05160/61/62 page no. 153 12430, 12408, 12425 page no. 158-159 12230 page no. 156
10005	1,5 - 2,5			1,20	
01131	1,5 - 2,5	5	22	1,20	
01133	4 - 6			1,24	

**Insulated male bullets 0,5-6 mm<sup>2</sup>**

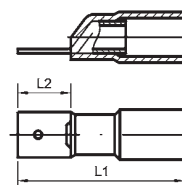
 Material: brass, tinned  
 Insulation sleeve: PVC


Part-No.	cross-section mm <sup>2</sup>	pin - Ø mm	dimensions mm		weight kg/‰ pcs.	crimping-tools/page no.
			L <sub>1</sub>	L <sub>2</sub>		
01140	0,5 - 1,0	4	22	9	0,60	12600/N, 12601, 05180 page no. 152 12858/05160/61/62 page no. 153 12430, 12408, 12425 page no. 158/59 12230 page no. 156
10015	1,5 - 2,5				1,50	
01141	1,5 - 2,5	5	22	9	0,75	
01142	4 - 6				0,89	

**Insulated receptacles and tabs 0,5-6 mm<sup>2</sup>**

 shrinkable, with adhesive  
 Material: Cu-ETP, tinned  
 Insulation sleeve free of halogen


type I / receptacle



type II / tab

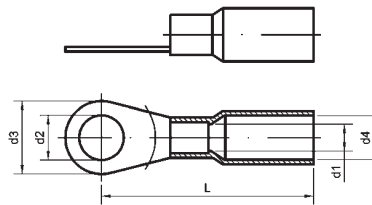
Part-No.	cross-section mm <sup>2</sup>	type	tab-width mm	tab-thickness mm	dimensions mm		weight kg/‰ pcs.	crimping-tools/page no.
					L <sub>1</sub>	L <sub>2</sub>		
11020	0,5 - 1,0	I	6,3	0,8	34,5	7,9	1,0	12601 page no. 152
11021	1,5 - 2,5				34,5		1,3	
11022	4 - 6				36,5		1,9	
11040	0,5 - 1,0	II	6,3	0,8	24,0	7,8	0,9	
11041	1,5 - 2,5				24,0		1,1	
11042	4 - 6				26,0		1,7	

Suitable to ensure waterproof connections. Shrink-ratio: 3:1, Shrinktemperature: &gt; + 100° C, operating temperature: -55° C up to + 125° C.



**Insulated cable lugs 0,5-6 mm<sup>2</sup> Ringtype,**

shrinkable with adhesive  
Material: Cu-ETP, tinned

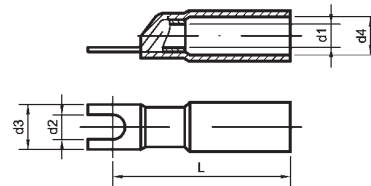


Part-No.	cross-section mm <sup>2</sup>	drilling M	dimensions mm				L	weight kg/% pcs.	crimping-tools/page no.
			d <sub>1</sub>	d <sub>2</sub>	d <sub>3</sub>	d <sub>4</sub>			
01172	0,5 - 1,0	4	1,6	4,3	8	24	1,5	12601 page no. 152	
01173		5		5,3	10		23		
01174		6		6,4	11		27		
01175		8		8,4	14		23		
01176		10		10,5	17		17		
01179	1,5 - 2,5	4	2,3	4,3	8	24	1,0		
01180		5		5,3	10		26		
01181		6		6,5	11		27		
01182		8		8,4	14		28		
01183	10	10,5	18	30	30	2,2			
01186	4 - 6	4	3,6	4,3	8	30	1,9		
01187		5		5,3	10		31		
01188		6		6,5	11		32		
01189		8		8,4	14		34		
01190		10		10,5	18		35		

Suitable to ensure waterproof connections. Shrink-ratio: 3:1, Shrinktemperature: > + 100° C, operating temperature: -55° C up to + 125° C.  
Insulation sleeve free of halogen

**Insulated cable lugs 0,5-6 mm<sup>2</sup> Forktype,**

shrinkable with adhesive  
Material: Cu-ETP, tinned

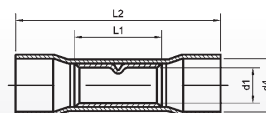
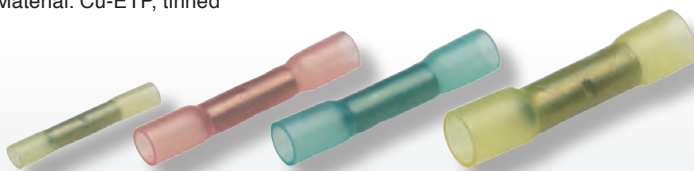


Part-No.	cross-section mm <sup>2</sup>	drilling M	dimensions mm				L	weight kg/% pcs.	crimping-tools/page no.
			d <sub>1</sub>	d <sub>2</sub>	d <sub>3</sub>	d <sub>4</sub>			
11000	0,5 - 1,0	4	1,6	4,3	6,4	4,8	23	0,8	
11001		5		5,3	9,5	24,2	0,9		
11004	1,5 - 2,5	4	2,3	4,3	6,4	5,5	23,5	0,9	
11005		5		5,3	9,4	25,6	1,1		
11008	4 - 6	4	3,6	4,3	9,5	7	27,5	2,0	
11009		5		5,3	9,5	27,5	2,1		

Suitable to ensure waterproof connections. Shrink-ratio: 3:1, Shrinktemperature: > + 100° C, operating temperature: -55° C up to + 125° C.  
Insulation sleeve free of halogen

**Insulated butt-connectors 0,1-6 mm<sup>2</sup>**

shrinkable with adhesive  
Material: Cu-ETP, tinned

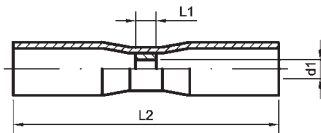
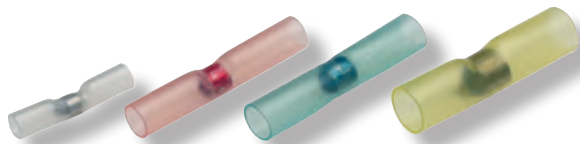


Part-No.	cross-section mm <sup>2</sup>	dimensions mm				weight kg/% pcs.	crimping-tools/page no.
		d <sub>1</sub>	d <sub>4</sub>	L <sub>1</sub>	L <sub>2</sub>		
01094	0,1 - 0,3	1,2	3,2	12,0	31,0	0,6	12601 page no. 152
01095	0,5 - 1,0	1,6	3,2	14,5	37,5	1,2	
01096	1,5 - 2,5	2,3	3,9	14,5	37,5	1,6	
01097	4 - 6	3,6	5,6	14,5	42,5	2,6	

Suitable to ensure waterproof connections. Shrink-ratio: 3:1, Shrinktemperature: > + 100° C, operating temperature: -55° C up to + 125° C.  
Insulation sleeve free of halogen

### Solder splices 0,3-6 mm<sup>2</sup>

shrinkable with adhesive  
to ensure airtight and waterproof cable connections



Part-No.	cross-section mm <sup>2</sup>	dimensions mm			operating temperature	weight kg/ % Stck
		d <sub>1</sub>	L <sub>1</sub>	L <sub>2</sub>		
01194	0,3 - 0,8	1,7	2,0	26	- 55° C bis + 95° C	0,22
01195	0,8 - 2,0	2,7	3,4	42		0,66
01196	2 - 4	4,5	4,0	42		0,76
01197	4 - 6	6	4,5	42		1,36

Solder splices with heat shrinkable tubing and adhesive. Suitable to ensure airtight and waterproof cable connections. The articles offer a combination out of solder and shrinkable connector and are outstandingly suitable to repair faulty cables in the field of the electro- and electronic industrie. The reliable protection against moisture and environmental factors prevent a corrosion and guarantee connections with an optimal electrical resistance. By using components under vibration a break of the cable caused through corrosion are excluded. So the solder splices offer tremendous advantages compared with usual repairing of damaged cables by using electrical tapes etc. By heating the solder splices you get the cable connection and the shrinking of the insulation tube with the adhesive in one handling operation. Caused by this one step process it is possible to reduce the repair costs. The pull out strength of the connection is 2,5 times higher compared with a pressed design.

#### Technical Data

Shrink ratio: 3:1  
Shrink temperature: > + 120° C  
Melting temp. solder alloy: + 126° C up to + 145° C  
Dielectric strength of the insulation: 15 kV/mm

### Solder splice mounting-set



Part-No.	content	
01198	50 pcs. solder splices	0,3-0,8 mm <sup>2</sup> /01194
	25 pcs. "	0,8-2,0 mm <sup>2</sup> /01195
	20 pcs. "	1,5-2,5 mm <sup>2</sup> /01196
	10 pcs. "	2,0-4,0 mm <sup>2</sup> /01197
	1 pcs. soldering-iron (butane-gas) with reflector	
01199	Butane-fuel, 250 ml canister	

### Assortment boxes out of varnished steel sheet



Part-No.	dimensions mm	description
01316	245 x 160 x 45	Box without content without carry-grip with 6 little and 1 tool-partition
01317	350 x 160 x 35	Box without content with carry-grip, 7 little and 1 tool partition
01318	350 x 160 x 35	Box without content with carry-grip, 12 little and 1 tool-partition
01319	375 x 235 x 55	Box without content with carry-grip, 19 little and 1 tool-partition